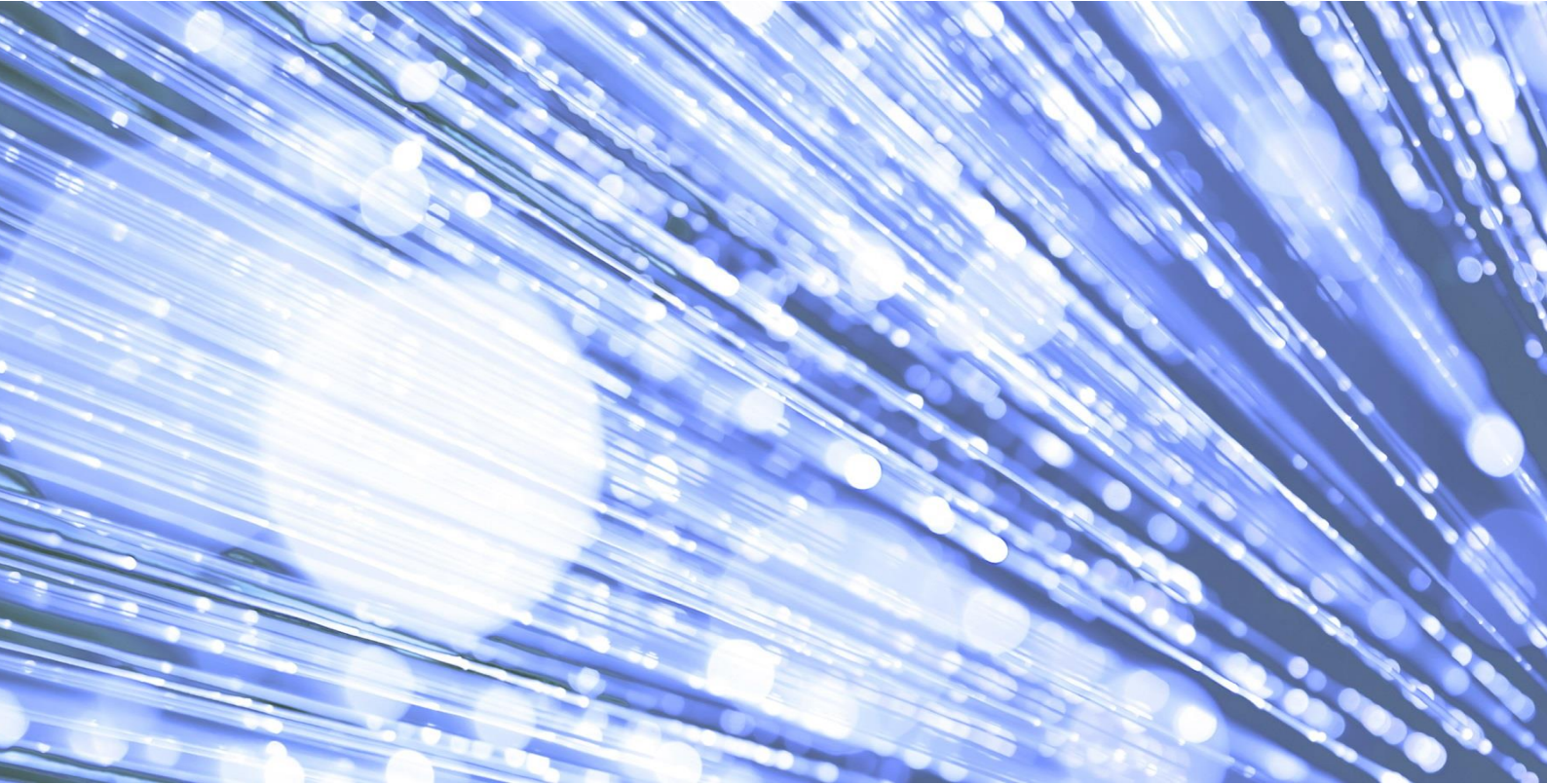


# Mental Health Services Data Set v5.0 Change Specification

Published April 2021



**Information and technology**  
**for better health and care**

Copyright ©2021 Health and Social Care Information Centre

The Health and Social Care Information Centre is a non-departmental body created by statute, also known as NHS Digital.

Document filename:			
Project / Programme	<b>Data Standards and New Data Collections</b>	Project	<b>Mental Health Services Data Set</b>
Document Reference			
Sponsor	<b>Antonia Williams</b>	Status	<b>Draft</b>
Developer	<b>Chris Turner</b>	Version	<b>0.1</b>
Author	<b>Chris Turner</b>	Version issue date	<b>11/01/2021</b>

This information standard (DCB0011) has been approved for publication by NHS England under [section 250 of the Health and Social Care Act 2012](#).

Assurance that this information standard meets the requirements of the Act and is appropriate for the use specified in the specification document has been provided by the Data Standards Assurance Service (DSAS) and approved by the Data Coordination Board (DCB).

This information standard comprises the following documents:

- Requirements Specification
- Change Specification
- Data Set Specification
- Implementation Guidance.

An Information Standards Notice DCB0011 Amd 29/2020 has been issued as a notification of use and implementation timescales. Please read this alongside the documents for the standard.

The controlled copies of these documents can be found on the [NHS Digital website](#). Any copies held outside of that area, in whatever format (e.g. paper, email attachment), are considered to have passed out of control and should be checked for currency and validity.



This information is licensed under the Open Government Licence v3.0. To view this licence, visit <http://www.nationalarchives.gov.uk/doc/open-government-licence/> or write to the Information Policy Team, The National Archives, Kew, Richmond, Surrey, TW9 4DU.

## Glossary of Terms

A full Glossary of Terms for the MHSDS Information Standard can be found within the [Requirements Specification](#).

# Document management

## Revision History

Version	Date	Summary of Changes
0.1	11/01/2021	First draft for Public Consultation

## Reviewers

This document must be reviewed by the following people:

Reviewer name	Title / Responsibility	Date	Version
Chris Turner	Data Sets Maintenance Operational Delivery Manager	11/01/2021	0.1
Nick Bridges	Senior Assurance Advisor		

## Approved by

This document must be approved by the following people:

Name	Title	Date	Version
Kate Croft	Information Lead Manager – Mental Health		
Nick Richman	Principle Data Manager		

# Contents

## 1. Contents

<b>2. Overview</b>	<b>5</b>
2.1. Summary	5
2.2. Supporting documents	9
2.3. Related standards	10
<b>3. Change specification</b>	<b>11</b>
3.1. Reason for release	11
3.2. Justification for changes	12
3.2.1. Deletion of data items that are no longer required within the data set, following comprehensive review with data submitters and data consumers .....	12
3.2.2. Inclusion of further specialised mental health (SMH) commissioning data fields to allow the separate overlapping SMH Data Set to be retired.....	14
3.2.3. Inclusion of further Transforming Care data requirements to support reporting of learning disability and autism care services.....	15
3.2.4. Updating the data set in line with new and evolving models of care, such as community crisis and internet enabled therapy services .....	17
3.2.5. Improved monitoring of access to specialist community perinatal mental health services by patients and their partners .....	18
3.2.6. Clarification to the data set scope to ensure consistent inclusion criteria are applied across services.....	19
3.2.7. Amendments to support reporting in line with the Independent Review of the Mental Health Act 1983 recommendations .....	20
3.2.8. Additional data fields for the uses of restrictive interventions to support reporting for the Mental Health Units (Use of Force) Act 2018.....	21
3.2.9. Improvements to the Protected Characteristic data items to better reflect the population .....	22
3.2.10. Various code list and definition updates to better reflect the delivery of care	23
3.2.11. Updates in line with recent and wider NHS Data Model & Dictionary developments.....	42
3.2.12. Change control .....	55
<b>Endnotes</b>	<b>55</b>

## 2. Overview

This product precisely defines the patient level Mental Health Services Data Set (MHSDS) standard. The Summary section below describes the standard; the Requirements and Conformance Criteria sections explain what is required of care providers and systems to conform to the standard, and how conformance is tested.

This document is the formal definition of the standard.

The key words MUST, SHOULD and MAY are defined in [RFC-2119](#).

### 2.1. Summary

Standard	
Standard Number	DCB0011
Standard Title	Mental Health Services Data Set (MHSDS)
Description	<p>The MHSDS is a person level, output based, secondary uses data set which aims to deliver robust, comprehensive, nationally consistent and comparable person-based information for children, young people and adults who are in contact with mental health, Learning Disability, autism or other neurodevelopmental conditions located in England or located outside England but treating patients commissioned by an English CCG or NHS England specialised commissioner or an NHS-led Provider Collaborative.</p> <p>As a secondary uses data set it re-uses clinical and operational data for purposes other than direct patient care, for example: commissioning, service improvement and service design. It defines the data items, definitions and associated value sets extracted or derived from local information systems.</p> <p><b><u>In Scope</u></b></p> <p>All activity relating to people of any age who receive care for a suspected or diagnosed mental health and wellbeing need, Learning Disability, autism or other neurodevelopmental conditions is within scope of the MHSDS.</p> <p>It may be that the person has:</p> <ul style="list-style-type: none"> <li>• A mental health and wellbeing need including; <ul style="list-style-type: none"> <li>○ gambling addiction and substance misuse</li> <li>○ Children and Young People's Improving Access to Psychological Therapies (IAPT) Services</li> </ul> </li> <li>• Any combination of mental health, Learning Disability or autism needs</li> </ul> <p><b><u>Out of Scope</u></b></p> <p>The following service types are currently out of scope and must not be included within submissions to the MHSDS:</p> <ul style="list-style-type: none"> <li>• Adult Improving Access to Psychological Therapies (as this activity is covered by the IAPT dataset).</li> <li>• Any patient receiving treatment through a specialist mental health, Learning Disabilities or autism care provider but is not</li> </ul>

	<p>thought to have a mental illness, learning disability or autism e.g. Smoking cessation services.</p>
<p>Examples of activity in scope</p>	<p>The dataset scope includes, but is not limited to, the examples below.</p> <p><b>Service users</b></p> <p>Any service user (adult, young person or child) who receive care for a suspected or diagnosed mental health and wellbeing need, Learning Disability or autism.</p> <p><b><u>Family Members, Carers or Partners</u></b></p> <p>Any family member, carer or partner (of the service user described above) who receives family, carer or partner interventions.</p> <p><b><u>Organisation Types</u></b></p> <p>Any service providers that provide assessments or care for people with a suspected or diagnosed mental health and wellbeing need, Learning Disability or autism including;</p> <ul style="list-style-type: none"> <li>• NHS Mental Health Trusts</li> <li>• NHS Acute Trusts<sup>1</sup></li> <li>• NHS Community Health Trust <b>Error! Bookmark not defined.</b></li> <li>• Independent and voluntary sector healthcare providers and any other qualified providers offering a service model that includes NHS funded and non-NHS funded patients <b>Error! Bookmark not defined.</b></li> </ul> <p><b><u>Service Types</u></b></p> <p>The 'Service or Team Type Referred To' and 'Hospital Bed Type' data items, defined in the MHSDS Technical Output Specification (TOS) attempt to define a national list of in-scope community and inpatient service types respectively for the MHSDS and in doing so provides examples of the services included in the scope. However, these lists may not be comprehensive considering evolving models of care delivery.</p> <p>Services covered by the dataset scope but not appearing in these data item lists must identify themselves against the most appropriate code available.</p> <p>The following service types are also included within the scope;</p> <ul style="list-style-type: none"> <li>• New and integrated models of community mental health services</li> </ul> <p>Primary care mental health services (excluding adult IAPT)</p> <p><b><u>Departments</u></b></p> <p>The standard must be read and used by all heads of mental health, learning disabilities and autism spectrum disorder services, and other clinical and support services, including community services, that have an active involvement in delivering secondary mental health care.</p>

<sup>1</sup> Where there is direct provision of specialist secondary mental health, Learning Disabilities, or autism services

	<p><b><u>Professionals</u></b></p> <p>The standard applies to all professions working in or supporting mental health, learning disabilities and autism spectrum disorder services and other services offering secondary mental health care including community services. The MHSDS Technical Output Specification (TOS) provides an indication of the care professionals that are within the scope of this information standard (see MHS901 Staff Details table).</p> <p><b><u>IT Systems</u></b></p> <p>The standard predominantly, but not exclusively, relates to clinical systems designed to support mental health, learning disabilities and autism spectrum disorder services, Patient Administration Systems (PAS) and Electronic Patient Records (EPR).</p>
IG and Linkage	<p>The data held in the MHSDS will be made available within NHS Digital for analysis, and also for other arm's-length bodies, NHS-funded mental health service providers and commissioners and the wider mental health community, to support research and innovation and understand the impact of mental health care on patient outcomes and experiences.</p> <p>Requests for data from the MHSDS will be managed through NHS Digital's Clear Data Access Tools and Data Access Request Service.</p> <p>Information will be published in line with NHS Digital's duty to publish under section 260(1) of the Health and Social Care Act 2012, unless it falls within section 260(2) of the Act.</p> <p>Mental health data may also be linked to data held by NHS Digital from various other data sets and collections to provide richer information and enhance existing and develop new publications, and to respond to requests for data and information. More information about the data sets and collections that NHS Digital hold and that may be used for linkage can be found on the <a href="#">NHS Digital Data Collections and Data Sets webpage</a>.</p> <p>Mental health data may also be linked to other data sets held by external bodies including Public Health England, NHS England and other researchers.</p>
<b>Release</b>	
Release Number	Amd 29/2020
Release Title	Version 5.0
Description	<p>The changes included in this release relate to:</p> <ul style="list-style-type: none"> <li>• Deletion of data items that are no longer required within the data set, following comprehensive review with data submitters and data consumers</li> <li>• Inclusion of further specialised mental health (SMH) commissioning data fields to allow the separate overlapping SMH Data Set to be retired</li> <li>• Inclusion of further Transforming Care data requirements to support reporting of learning disability and autism care services. This includes additional fields from the SCCI2007 Assuring Transformation (AT) collection to support a longer-term hybrid MHSDS:AT model which has minimised</li> </ul>

	<p>duplication of content and is collected from the provider or commissioner appropriately.</p> <ul style="list-style-type: none"> <li>• Updating the data set in line with new and evolving models of care, such as community crisis and internet enabled therapy services</li> <li>• Improved monitoring of access to specialist community perinatal mental health services by patients and their partners</li> <li>• Clarification to the data set scope to ensure consistent inclusion criteria are applied across services</li> <li>• Amendments to support reporting in line with the Independent Review of the Mental Health Act 1983 recommendations</li> <li>• Additional data fields for the uses of restrictive interventions to support reporting for the Mental Health Units (Use of Force) Act 2018</li> <li>• Improvements to the Protected Characteristic data items to better reflect the population, such as inclusion of a placeholder for Ethnic Category 2021 and a move to Gender Identity Code</li> <li>• Various code and definition updates to better reflect the delivery of care, such as to Hospital Bed Types</li> <li>• Updates in line with recent and wider NHS Data Model &amp; Dictionary developments.</li> </ul>
Implementation Completion Date	<p><b><u>System Conformance</u></b></p> <p>From 1 October 2021 mental health systems <b>MUST</b> be fully conformant with this standard.</p> <p><b><u>Health and Care Organisations</u></b></p> <p>From 1 October 2021 providers of mental health, learning disabilities and autism services as defined in this Information Standard <b>MUST</b> be able to collect the information as defined in the Technical Output Specification for local use.</p> <p>From 1 November 2021 providers of NHS funded mental health, learning disabilities and autism services <b>MUST</b> begin submitting MHSDS submissions in accordance with this standard.</p>
Full Conformance Date	20 November 2021



## 2.2. Supporting documents

This document should be read in conjunction with the following:

Ref #	Title
1	<a href="#">MHSDS Requirements Specification</a>
2	<a href="#">MHSDS Technical Output Specification</a>
3	<a href="#">MHSDS Implementation Guidance</a>
4	<a href="#">MHSDS User Guidance</a>
6	<a href="#">NHS Data Model and Dictionary Change Request</a>

Please see section 2.4 of the *Implementation Guidance* for a full list and descriptions of each related document listed above and where they can be found.

DRAFT

## 2.3. Related standards

Reference	Title
DCB1069	Community Services Data Set (CSDS)
DCB1513	Maternity Services Data Set (MSDS)
DCB2007	Assuring Transformation
DCB1605	Accessible Information
ISB0149-02	NHS Number for Secondary Care
ISB0149-01	NHS Number for General Practice
SCCI0034	SNOMED CT
SCCI0021	International Classification of Diseases
ISB0092	Commissioning Data Sets (CDS)
DCB0090	Health and Social Care Organisation Reference Data
DCB2094	Sexual Orientation Monitoring
DCB0092-2062	Emergency Care Data Set
DCB3017	Overseas Visitor Charging Category (OVCC)
DCB1520	Improving Access to Psychological Therapies Data Set

Further details regarding the above standards can be found on the [DCB Standards and Collections webpage](#)<sup>i</sup>. This webpage also contains a list of all current DCB and Information Standards Board (ISB) standards and collections.

## 3. Change specification

### 3.1. Reason for release

The MHSDS applies to, and is used by, a wide range of stakeholders. The content of the data set is determined from consultation with these stakeholders which include various sections of Department of Health and Social Care (DHSC) policy, NHS England and Improvement, Care Quality Commission (CQC), service providers and commissioners.

Changes are required to the MHSDS v5.0 to ensure that the data set remains 'fit for purpose'. The following amendments are required in response to changes in clinical practice or coding, changes to policy requirements, changes to the NHS Data Model and Dictionary in light of other Information Standards, and requests for amendments by care providers or system suppliers.

A maintenance strategy has been agreed with the Mental Health Data and Information Programme Board for NHS Digital to facilitate annual updates of the data set. This release represents the third annual update in this development cycle. Please see section 6 of the Implementation Guidance for full details of the maintenance strategy.

The remainder of this document details the reasons for the changes (3.2 Justification for changes) detailing each change individually.

## 3.2. Justification for changes

### 3.2.1. Deletion of data items that are no longer required within the data set, following comprehensive review with data submitters and data consumers

Reduced burden by removing data fields no longer required for national secondary uses. A comprehensive review is to be undertaken with support from NHS England and NHS Improvement and other key stakeholders

DRAFT

Group/ Table	Item Name / Level	Item Type	Item Amend Type	Previous	New	Change Reason(s)
MHS201Care Contact	GROUP THERAPY INDICATOR	Data Item	Deletion	GROUP THERAPY INDICATOR	CARE CONTACT PATIENT THERAPY MODE	The new item has been included within IAPT v2.0 and meets both MHSDS and IAPT requirements. If the data sets were to merge, this item would need to be adopted.
MHS001MPI	PERSON STATED GENDER CODE	Data Item	Deletion	Gender	Item to be replaced by gender identity code	Item to be replaced by gender identity code
MHS001MPI	LANGUAGE CODE (PREFERRED)	Data Item	Deletion			As the language code ISO standard is being updated from ISO1 to ISO2 for Mental Health and not other data sets at this time, this item needs to be retired and replaced
MHS001 MPI	ORGANISATION IDENTIFIER (RESIDENCE RESPONSIBILITY)	Data Item	Deletion			Could be retired as the derived value is much more robust and useful.
MHS002 GP	ORGANISATION IDENTIFIER (GP PRACTICE RESPONSIBILITY)	Data Item	Deletion			Could be retired as the derived value is much more robust and useful.
MHS101 Referral	Replacement appointment ISSUED DATE (MENTAL HEALTH AND COMMUNITY CARE)	Data Item	Deletion			Not used and DQ not reported on.
MHS201 Care Contact	REPLACEMENT APPOINTMENT DATE OFFERED	Data Item	Deletion			Not used and DQ not reported on.
MHS201 Care Contact	REPLACEMENT APPOINTMENT BOOKED DATE	Data Item	Deletion			Not used and DQ not reported on.
MHS505RestrictiveIntervention			Deletion	Restrictive Intervention	Restrictive Intervention Incident	This table has been removed as the way of recording these is changing, is it being replaced with MHS505RestrictiveInterventionInc

MHS702 CPA Review	CARE PROGRAMME APPROACH REVIEW ABUSE QUESTION ASKED INDICATOR	Data Item	Deletion			Data is not of sufficient value.
-------------------	---	-----------	----------	--	--	----------------------------------

### 3.2.2. Inclusion of further specialised mental health (SMH) commissioning data fields to allow the separate overlapping SMH Data Set to be retired

Support the retirement of the SMH collection by ensuring the MHSDS includes the required data items (where appropriate)

Group/ Table	Item Name / Level	Item Type	Item Amend Type	Previous	New	Change Reason(s)
MHS502WardStay	Ward Code	Data Item	Amendment	O (Optional)	R (Required)	As Specialised Commissioning is being included in MHSDS the mandate needs to match

### **3.2.3. Inclusion of further Transforming Care data requirements to support reporting of learning disability and autism care services.**

Support the retirement of the AT collection by ensuring the MHSDS includes the required data items (where appropriate)

DRAFT

Group/ Table	Item Name / Level	Item Type	Item Amend Type	Previous	New	Change Reason(s)
MHS501HospProvSpell	TRANSFORMING CARE INDICATOR	Data Item	Addition		TRANSFORMING CARE INDICATOR	The current method picking up a lot of patients believed to be out of scope, so this flag will make the numbers more accurate
MHS501HospProvSpell	TRANSFORMING CARE INDICATOR	Data Item	Amendment	TRANSFORMING CARE INDICATOR	TRANSFORMING CARE TYPE	Non binary now so renamed to reflect
MHS203OtherAttend	OTHER PERSON IN ATTENDANCE AT CARE CONTACT	Data Item	Amendment	01 - Independent Advocate (Family Member) 02 - Independent Advocate (Independent Person) 03 - Independent Mental Capacity Advocate (IMCA) 04 - Independent Mental Health Advocate (IMHA) 05 - Non Instructed Advocate 10 - Parent or relative (Non-Advocate) 11 - Friend or neighbour (Non-Advocate) 12 - Care Worker (Non-Advocate) 13 - Other adult with parental responsibility 14 - Social Worker (Non-Advocate)	01 – Independent Advocate (Family Member) 02 - Independent Advocate (Independent Person) 03 - Independent Mental Capacity Advocate (IMCA) 04 - Independent Mental Health Advocate (IMHA) 05 - Non Instructed Advocate 10 - Parent or relative (Non-Advocate) 11 - Friend or neighbour (Non-Advocate) 12 - Care Worker (Non-Advocate)	New codes need for more accurate reporting. The data dictionary is making all national codes make sense in their own right and to allow possible future importing of the code lists all labels must have a valid value. All headings therefore have been removed and to make the description more meaningful the (now) old header is a suffix where appropriate.
MHS203OtherAttend	OTHER PERSON IN ATTENDANCE AT CARE CONTACT	Data Item	Addition		REASON PATIENT DOES NOT HAVE AN IMCA	Added as part of the Assuring Transformation requirement to avoid duplication and burden
MHS203OtherAttend	OTHER PERSON IN ATTENDANCE AT CARE CONTACT	Data Item	Addition		REASON PATIENT DOES NOT HAVE AN IMHA	Added as part of the Assuring Transformation requirement to avoid duplication and burden



### 3.2.4. Updating the data set in line with new and evolving models of care, such as community crisis and internet enabled therapy services

Ensure the data set more accurately reflects service provision, such as with community crisis and internet enabled therapy services, by providing the relevant codes to record against

Group/ Table	Item Name / Level	Item Type	Item Amend Type	Previous	New	Change Reason(s)
MHS201CareContact	PLANNED CARE CONTACT INDICATOR	Data Item	Addition			Indicates whether the Care Contact was a planned appointment or an unscheduled contact (e.g. in crisis). At the moment, the Attended or Did Not Attend code is being used but this is not appropriate.
MHS302DropInContact	DROP IN CONTACT	Data Table	Addition			A new table that captures reduced detail on the person is proposed that allows some basic demographic information to be collected is proposed to capture this activity. We have created a new MHS302 Drop In Contact table to capture types of crisis guidance.

### 3.2.5. Improved monitoring of access to specialist community perinatal mental health services by patients and their partners

Group/ Table	Item Name / Level	Item Type	Item Amend Type	Previous	New	Change Reason(s)
MHS101Referral	OFFER STATUS (COMMUNITY PERINATAL MENTAL HEALTH PARTNER ASSESSMENT)	Data Item	Addition		OFFER STATUS (COMMUNITY PERINATAL MENTAL HEALTH PARTNER ASSESSMENT)	We need to know whether community PMH services are offering husband/partner/wife of women in contact with specialist perinatal mental health services evidence-based assessments for their mental health and signposting to MH support/relevant services as required.
MHS101Referral	PRIMARY REASON FOR REFERRAL (MENTAL HEALTH)	Data Item	Amendment		Addition of: 29 - Community Perinatal Mental Health Partner Assessment	We need to know whether community PMH services are offering husband/partner/wife of women in contact with specialist perinatal mental health services evidence-based assessments for their mental health and signposting to MH support/relevant services as required.
MHS103OtherReasonReferral	OTHER REASON FOR REFERRAL (MENTAL HEALTH)	Data Item	Amendment		Addition of: 29 - Community Perinatal Mental Health Partner Assessment	We need to know whether community PMH services are offering husband/partner/wife of women in contact with specialist perinatal mental health services evidence-based assessments for their mental health and signposting to MH support/relevant services as required.

### 3.2.6. Clarification to the data set scope to ensure consistent inclusion criteria are applied across services

Clarify the scope to ensure service activity is submitted consistently across organisations.

Group/ Table	Item Name / Level	Item Type	Item Amend Type	Previous	New	Change Reason(s)
				<p>The MHSDS is a patient level, output based, secondary uses data set which seeks to deliver robust, comprehensive, nationally consistent and comparable person-based information for children, young people and adults who are in contact with Mental Health, Learning Disabilities or Autism Spectrum Disorder Services.</p> <p>As a secondary uses data set it re-uses clinical and operational data for purposes other than direct patient care. It defines the data items, definitions and associated value sets extracted or derived from local information systems.</p>	<p>The MHSDS is a person level, output based, secondary uses data set which aims to deliver robust, comprehensive, nationally consistent and comparable person-based information for children, young people and adults who are in contact with mental health, Learning Disability, autism or other neurodevelopmental conditions located in England or located outside England but treating patients commissioned by an English CCG or NHS England specialised commissioner or an NHS-led Provider Collaborative.</p> <p>As a secondary uses data set it re-uses clinical and operational data for purposes other than direct patient care, for example: commissioning, service improvement and service design. It defines the data items, definitions and associated value sets extracted or derived from local information systems</p>	<p>To clarify the scope of the data set to ensure that potential new submitters are clear whether they are in scope or not and to ensure service activity is included consistently across organisations.</p> <p>To consider options for strengthening the submission requirement for non-English providers providing care for patients registered with a GP in England. E.g. a patient placed over the border in a Welsh or Scottish hospital</p>

### 3.2.7. Amendments to support reporting in line with the Independent Review of the Mental Health Act 1983 recommendations

Allowing new areas of national reporting to be undertaken, such as adding items to support reporting for the Mental Health Units (Use of Force bill).

Group/ Table	Item Name / Level	Item Type	Item Amend Type	Previous	New	Change Reason(s)
				Autism Spectrum Disorder	Autism	The independent review of the Mental Health Act has made a range of recommendations including those about how data on the act should be recorded in MHSDS, and those in relation to people with autism, learning disability or both.
MHS101Referral	PRIMARY REASON FOR REFERRAL (MENTAL HEALTH)	Data Item	Amendment	24 - Neurodevelopmental Conditions, excluding Autism Spectrum Disorder 25 - Suspected Autism Spectrum Disorder 26 - Diagnosed Autism Spectrum Disorder	24 - Neurodevelopmental Conditions, excluding Autism 25 - Suspected Autism 26 - Diagnosed Autism	Autism Spectrum Disorder is an outdated term and has been replaced with Autism
MHS103OtherReasonReferral	OTHER REASON FOR REFERRAL (MENTAL HEALTH)	Data Item	Amendment	24 - Neurodevelopmental Conditions, excluding Autism Spectrum Disorder 25 - Suspected Autism Spectrum Disorder 26 - Diagnosed Autism Spectrum Disorder	24 - Neurodevelopmental Conditions, excluding Autism 25 - Suspected Autism 26 - Diagnosed Autism	Autism Spectrum Disorder is an outdated term and has been replaced with Autism

### 3.2.8. Additional data fields for the uses of restrictive interventions to support reporting for the Mental Health Units (Use of Force) Act 2018

Group/ Table	Item Name / Level	Item Type	Item Amend Type	Previous	New	Change Reason(s)
MHS505RestrictiveInterventionInc	RESTRICTIVE INTERVENTION REASON	Data Item	Addition		Addition of the reason for the use of restrictive interventions	Restrictive interventions are a key focus of the Mental Health Units (Use of Force) Bill 2017–19 currently going through Parliament, which will set out new requirements for mental health services. The requested changes are intend to support development of the bill and to facilitate reporting of incidents at both a local and national level. Reporting in line with the Law - Use of Force act monitoring of the use of restrictive practices
MHS505RestrictiveInterventionInc	RESTRICTIVE INTERVENTION REASON	Data Item	Amendment	10 - Prevent a patient being violent to others 11 - Prevent a patient causing serious harm to themselves or being at risk of serious physical injury by accident 12 - Lawfully administer medicines or other medical treatment 13 - Facilitate personal care 14 - Facilitate nasogastric feeding 15 - Prevent the patient exhibiting extreme and prolonged over-activity 16 - Prevent the patient exhibiting otherwise dangerous behaviour; 17 - Undertake a search of the patient's clothing or property to ensure the safety of others 18 - Prevent the patient absconding from lawful custody 98 - Other (not listed) 99 - Not Known (Not Recorded)	10 - Prevent a patient being violent to others 11 - Prevent a patient causing serious harm to themselves 12 - Prevent a patient causing serious physical injury to themselves by accident 13 - Lawfully administer medicines or other medical treatment 14 - Facilitate personal care 15 - Facilitate nasogastric feeding 16 - Prevent the patient exhibiting extreme and prolonged over-activity 17 - Prevent the patient exhibiting otherwise dangerous behaviour; 18 - Undertake a search of the patient's clothing or property to ensure the safety of others 19 - Prevent the patient absconding from lawful custody 98 - Other (not listed) 99 - Not Known (Not Recorded)	Code list altered for more accuracy

### 3.2.9. Improvements to the Protected Characteristic data items to better reflect the population

Group/ Table	Item Name / Level	Item Type	Item Amend Type	Previous	New	Change Reason(s)
MHS001MPI	PERSON STATED GENDER CODE	Data Item	Deletion	Gender		Item to be replaced by gender identity code
MHS001MPI	GENDER IDENTITY CODE (MENTAL HEALTH)	Data Item	Addition		GENDER IDENTITY CODE (MENTAL HEALTH)	New item to replace person stated gender code, to better reflect the population
MHS001MPI	GENDER IDENTITY SAME AT BIRTH INDICATOR	Data Item	Addition		GENDER IDENTITY SAME AT BIRTH INDICATOR	To align with the new Gender data item and the HIV data set this new data item had been added to clarify (and help derive) trans without labelling specifically
MHS001MPI	ETHNIC CATEGORY 2021	Data Item	Addition			Pilot / Placeholder data item for when the 2021 census goes live, the old data item will be shut off and this one will take over

### **3.2.10. Various code list and definition updates to better reflect the delivery of care**

Addressing known issues or enhancing existing items to ensure local data can be submitted accurately

DRAFT

Group/ Table	Item Name / Level	Item Type	Item Amend Type	Previous	New	Change Reason(s)
MHS501HospitalProvider Spell	DISCHARGE METHOD CODE (HOSPITAL PROVIDER SPELL)	Data Item	Amendment	<p>1 - Patient discharged on clinical advice or with clinical consent</p> <p>2 - PATIENT discharged him/herself or was discharged by a relative or advocate</p> <p>3 - Patient discharged by mental health review tribunal, Home Secretary or court</p> <p>4 - Patient died</p> <p>6 - Patient discharged him/herself</p> <p>7 - Patient discharged by a relative or advocate</p> <p>8 - Not applicable - Hospital Provider Spell not finished at episode end (i.e. not discharged) or current episode unfinished</p> <p>9 - Not known</p>	<p>1 - Patient discharged on clinical advice or with clinical consent</p> <p>3 - Patient discharged by mental health review tribunal, Home Secretary or court</p> <p>4 - Patient died</p> <p>6 - Patient discharged him/herself</p> <p>7 - Patient discharged by a relative or advocate</p> <p>8 - Not applicable - Hospital Provider Spell not finished at episode end (i.e. not discharged) or current episode unfinished</p> <p>9 - Not known</p>	Code 2 removed as it is now split into codes 6 and 7



MHS003Accommodation Status	ACCOMMODATION STATUS CODE	Data Item	Amendment	<p>MA00 - Mainstream Housing</p> <p>MA01 - Owner occupier</p> <p>MA02 - Settled mainstream housing with family/friends</p> <p>MA03 - Shared ownership scheme e.g. Social Homebuy Scheme (tenant purchase percentage of home value from landlord)</p> <p>MA04 - Tenant - Local Authority/Arms Length Management Organisation/Registered Landlord</p> <p>MA05 - Tenant - Housing Association</p> <p>MA06 - Tenant - private landlord</p> <p>MA09 - Other mainstream housing</p> <p>HM00 - Homeless</p> <p>HM01 - Rough sleeper</p> <p>HM02 - Squatting</p> <p>HM03 - Night shelter/emergency hostel/Direct access hostel (temporary accommodation accepting self referrals, no waiting list and relatively frequent vacancies)</p> <p>HM04 - Sofa surfing (sleeps on different friends floor each night)</p> <p>HM05 - Placed in temporary accommodation by Local Authority (including Homelessness resettlement service) e.g.</p>	<p>01 - Owner occupier</p> <p>02 - Tenant - Local Authority/Arms Length Management Organisation/Registered Landlord</p> <p>03 - Tenant - private landlord</p> <p>04 - Settled mainstream housing with family</p> <p>05 - Settled mainstream housing with friends</p> <p>06 - University or college accommodation</p> <p>07 - Accommodation tied to job (including Armed Forces)</p> <p>08 - Mobile accommodation</p> <p>09 - Care home with nursing</p> <p>10 - Care home without nursing</p> <p>11 - Specialist housing ie, suitable &amp; support available to meet specific needs</p> <p>12 - Rough sleeper</p> <p>13 - Squatting</p> <p>14 - Sofa surfing (sleeps on different friends floor each night)</p> <p>15 - Staying with friends/family as a short term guest</p> <p>16 - Bed and breakfast accommodation to prevent or relieve homelessness</p> <p>17 - Sleeping in a night shelter</p> <p>18 - Hostel to prevent or relieve homelessness</p> <p>19 - Temporary housing to prevent or relieve homelessness</p> <p>20 - Admitted patient settings</p> <p>21 - Criminal justice settings</p> <p>22 - Other (Not elsewhere classified)</p>	New and renamed codes for more accuracy and clarity in reporting

				<p>Bed and Breakfast accommodation HM06 - Staying with friends/family as a short term guest HM07 - Other homeless MH00 - Accommodation with mental health care support MH01 - Supported accommodation (accommodation supported by staff or resident caretaker) MH02 - Supported lodgings (lodgings supported by staff or resident caretaker) MH03 - Supported group home (supported by staff or resident caretaker) MH04 - Mental Health Registered Care Home MH09 - Other accommodation with mental health care and support HS00 - Acute/long stay healthcare residential facility/hospital HS01 - NHS acute psychiatric ward HS02 - Independent hospital/clinic HS03 - Specialist rehabilitation/recovery HS04 - Secure psychiatric unit HS05 - Other NHS facilities/hospital HS09 - Other acute/long stay healthcare residential facility/hospital</p>	
--	--	--	--	---	--

				<p>CH00 - Accommodation with other (not specialist mental health) care support</p> <p>CH01 - Foyer - accommodation for young people aged 16-25 who are homeless or in housing need</p> <p>CH02 - Refuge</p> <p>CH03 - Non-Mental Health Registered Care Home</p> <p>CH09 - Other accommodation with care and support (not specialist mental health)</p> <p>CJ00 - Accommodation with criminal justice support</p> <p>CJ01 - Bail/Probation hostel</p> <p>CJ02 - Prison</p> <p>CJ03 - Young Offender Institution</p> <p>CJ05 - Young Offender Institution (15-17)</p> <p>CJ06 - Young Offender Institution (18-21)</p> <p>CJ04 - Detention Centre</p> <p>CJ07 - Secure Children's Home (Secure Welfare Accommodation only)</p> <p>CJ08 - Secure Children's Home (Youth Detention Accommodation only)</p> <p>CJ10 - Secure Children's Home (Secure Welfare Accommodation and Youth Detention Accommodation)</p> <p>CJ11 - Secure Training Centre</p>	
--	--	--	--	--	--

				<p>CJ12 - Other accommodation with criminal justice support</p> <p>SH00 - Sheltered Housing (accommodation with a scheme manager or warden living on the premises or nearby, contactable by an alarm system if necessary)</p> <p>SH01 - Sheltered housing for older persons</p> <p>SH02 - Extra care sheltered housing (also known as 'very sheltered housing'. For people who are less able to manage on their own, but who do need an extra level of care. Services offered vary between schemes, but meals and some personal care are often provided.)</p> <p>SH03 - Nursing Home for older persons</p> <p>SH09 - Other sheltered housing</p> <p>ML00 - Mobile accommodation</p> <p>OC96 - Not elsewhere classified</p> <p>OC97 - Not specified</p> <p>OC98 - Not applicable</p> <p>OC99 - Not Known (Not Recorded)</p>		
MHS501HospProvSpell	PLANNED DISCHARGE DESTINATION CODE (HOSPITAL PROVIDER SPELL)	Data Item	Amendment		<p>39 - Prison</p> <p>40 - Police Station/Police Custody Suite</p>	New codes needed for more accurate reporting

MHS501HospProvSpell	DISCHARGE DESTINATION CODE (HOSPITAL PROVIDER SPELL)	Data Item	Amendment		39 - Prison 40 - Police Station/Police Custody Suite	New codes needed for more accurate reporting
---------------------	---	-----------	-----------	--	---	---

DRAFT

MHS501HospProvSpell	DISCHARGE DESTINATION CODE (HOSPITAL PROVIDER SPELL)	Data Item	Amendment	19 - Usual place of residence unless listed below, for example, a private dwelling whether owner occupied or owned by local authority, housing association or other landlord. This includes wardened accommodation but not residential accommodation where health care is provided. It also includes PATIENTS with no fixed abode. 29 - Temporary place of residence when usually resident elsewhere (includes hotel, residential educational establishment) 30 - Repatriation from high security psychiatric accommodation in an NHS Hospital Provider (NHS Trust) 37 - Court 38 - Penal establishment or police station 39 - Prison 40 - Police Station/Police Custody Suite 48 - High Security Psychiatric Hospital, Scotland 49 - NHS other hospital provider - high security psychiatric accommodation 50 - NHS other hospital provider - medium secure unit 51 - NHS other hospital provider - ward for	19 - Usual place of residence unless listed below, for example, a private dwelling whether owner occupied or owned by local authority, housing association or other landlord. This includes wardened accommodation but not residential accommodation where health care is provided. It also includes PATIENTS with no fixed abode. 29 - Temporary place of residence when usually resident elsewhere (includes hotel, residential educational establishment) 30 - Repatriation from high security psychiatric accommodation in an NHS Hospital Provider (NHS Trust) 37 - Court 39 - Prison 40 - Police Station/Police Custody Suite 48 - High Security Psychiatric Hospital, Scotland 49 - NHS other hospital provider - high security psychiatric accommodation 50 - NHS other hospital provider - medium secure unit 51 - NHS other hospital provider - ward for general PATIENTS or the younger physically disabled 52 - NHS other hospital provider - ward for maternity PATIENTS or neonates 53 - NHS other hospital provider - ward for PATIENTS who are mentally ill or have learning disabilities 54 - NHS run Care Home 65 - Local Authority residential accommodation ie where care is provided 66 - Local Authority foster care 79 - Not applicable - PATIENT died or still birth 84 - Non-NHS run hospital - medium secure unit 85 - Non-NHS (other than Local Authority) run Care Home 87 - Non-NHS run hospital	New codes need for more accurate reporting following some removal of "new" codes as it caused confusion following feedback from consultation

				<p>general PATIENTS or the younger physically disabled</p> <p>52 - NHS other hospital provider - ward for maternity PATIENTS or neonates</p> <p>53 - NHS other hospital provider - ward for PATIENTS who are mentally ill or have learning disabilities</p> <p>54 - NHS run Care Home</p> <p>55 - NHS run Care Home With Nursing</p> <p>56 - NHS run Care Home Without Nursing</p> <p>65 - Local Authority residential accommodation ie where care is provided</p> <p>67 - Local Authority residential accommodation - Care Home With Nursing</p> <p>68 - Local Authority residential accommodation - 24 hour on site staffed tenancy</p> <p>69 - Local Authority residential accommodation - less than 24 hour on site staffed tenancy</p> <p>70 - Local Authority residential accommodation - Care Home Without Nursing</p> <p>66 - Local Authority foster care</p> <p>79 - Not applicable - PATIENT died or still birth</p>	<p>88 - Non-NHS (other than Local Authority) run Hospice</p> <p>94 - Forced Repatriation</p> <p>98 - Not applicable</p> <p>99 - Not known</p>	
--	--	--	--	--	---	--

				84 - Non-NHS run hospital - medium secure unit 85 - Non-NHS (other than Local Authority) run Care Home 86 - Non-NHS (other than Local Authority) run Care Home with Nursing 89 - Non-NHS (other than Local Authority) run Care Home Without Nursing 87 - Non-NHS run hospital 90 - Non-NHS run hospital - Care Home With Nursing 91 - Non-NHS run hospital - Care Home Without Nursing 92 - Non-NHS run hospital - 24 hour on site staffed tenancy 93 - Non-NHS run hospital - less than 24 hour on site staffed tenancy 94 - Forced Repatriation 88 - Non-NHS (other than Local Authority) run Hospice 98 - Not applicable 99 - Not known	
--	--	--	--	--	--



MHS501HospProvSpell	PLANNED DISCHARGE DESTINATION CODE (HOSPITAL PROVIDER SPELL)	Data Item	Amendment	<p>19 - Usual place of residence unless listed below, for example, a private dwelling whether owner occupied or owned by local authority, housing association or other landlord. This includes wardened accommodation but not residential accommodation where health care is provided. It also includes PATIENTS with no fixed abode.</p> <p>29 - Temporary place of residence when usually resident elsewhere (includes hotel, residential educational establishment)</p> <p>30 - Repatriation from high security psychiatric accommodation in an NHS Hospital Provider (NHS Trust)</p> <p>37 - Court</p> <p>38 - Penal establishment or police station</p> <p>39 - Prison</p> <p>40 - Police Station/Police Custody Suite</p> <p>48 - High Security Psychiatric Hospital, Scotland</p> <p>49 - NHS other hospital provider - high security psychiatric accommodation</p> <p>50 - NHS other hospital provider - medium secure unit</p> <p>51 - NHS other hospital provider - ward for</p>	<p>19 - Usual place of residence unless listed below, for example, a private dwelling whether owner occupied or owned by local authority, housing association or other landlord. This includes wardened accommodation but not residential accommodation where health care is provided. It also includes PATIENTS with no fixed abode.</p> <p>29 - Temporary place of residence when usually resident elsewhere (includes hotel, residential educational establishment)</p> <p>30 - Repatriation from high security psychiatric accommodation in an NHS Hospital Provider (NHS Trust)</p> <p>37 - Court</p> <p>39 - Prison</p> <p>40 - Police Station/Police Custody Suite</p> <p>48 - High Security Psychiatric Hospital, Scotland</p> <p>49 - NHS other hospital provider - high security psychiatric accommodation</p> <p>50 - NHS other hospital provider - medium secure unit</p> <p>51 - NHS other hospital provider - ward for general PATIENTS or the younger physically disabled</p> <p>52 - NHS other hospital provider - ward for maternity PATIENTS or neonates</p> <p>53 - NHS other hospital provider - ward for PATIENTS who are mentally ill or have learning disabilities</p> <p>54 - NHS run Care Home</p> <p>65 - Local Authority residential accommodation ie where care is provided</p> <p>66 - Local Authority foster care</p> <p>79 - Not applicable - PATIENT died or still birth</p> <p>84 - Non-NHS run hospital - medium secure unit</p> <p>85 - Non-NHS (other than Local Authority) run Care Home</p> <p>87 - Non-NHS run hospital</p>	New codes needed for more accurate reporting
---------------------	--	-----------	-----------	--	--	--

				<p>general PATIENTS or the younger physically disabled</p> <p>52 - NHS other hospital provider - ward for maternity PATIENTS or neonates</p> <p>53 - NHS other hospital provider - ward for PATIENTS who are mentally ill or have learning disabilities</p> <p>54 - NHS run Care Home</p> <p>55 - NHS run Care Home With Nursing</p> <p>56 - NHS run Care Home Without Nursing</p> <p>65 - Local Authority residential accommodation ie where care is provided</p> <p>67 - Local Authority residential accommodation - Care Home With Nursing</p> <p>68 - Local Authority residential accommodation - 24 hour on site staffed tenancy</p> <p>69 - Local Authority residential accommodation - less than 24 hour on site staffed tenancy</p> <p>70 - Local Authority residential accommodation - Care Home Without Nursing</p> <p>66 - Local Authority foster care</p> <p>79 - Not applicable - PATIENT died or still birth</p>	<p>88 - Non-NHS (other than Local Authority) run Hospice</p> <p>94 - Forced Repatriation</p> <p>98 - Not applicable</p> <p>99 - Not known</p>	
--	--	--	--	--	---	--

				84 - Non-NHS run hospital - medium secure unit 85 - Non-NHS (other than Local Authority) run Care Home 86 - Non-NHS (other than Local Authority) run Care Home with Nursing 89 - Non-NHS (other than Local Authority) run Care Home Without Nursing 87 - Non-NHS run hospital 90 - Non-NHS run hospital - Care Home With Nursing 91 - Non-NHS run hospital - Care Home Without Nursing 92 - Non-NHS run hospital - 24 hour on site staffed tenancy 93 - Non-NHS run hospital - less than 24 hour on site staffed tenancy 94 - Forced Repatriation 88 - Non-NHS (other than Local Authority) run Hospice 98 - Not applicable 99 - Not known	
--	--	--	--	--	--

MHS501HospProvSpell	DISCHARGE DESTINATION CODE (HOSPITAL PROVIDER SPELL)	Data Item	Amendment		55 - NHS run Care Home With Nursing 56 - NHS run Care Home Without Nursing 67 - Local Authority residential accommodation - Care Home With Nursing 68 - Local Authority residential accommodation - 24 hour on site staffed tenancy 69 - Local Authority residential accommodation - less than 24 hour on site staffed tenancy 70 - Local Authority residential accommodation - Care Home Without Nursing 86 - Non-NHS (other than Local Authority) run Care Home with Nursing 89 - Non-NHS (other than Local Authority) run Care Home Without Nursing 90 - Non-NHS run hospital - Care Home With Nursing 91 - Non-NHS run hospital - Care Home Without Nursing 92 - Non-NHS run hospital - 24 hour on site staffed tenancy 93 - Non-NHS run hospital - less than 24 hour on site staffed tenancy	New codes need for more accurate reporting
MHS101Referral	CLINICAL RESPONSE PRIORITY TYPE	Data Item	Amendment	1 - Emergency 2 - Urgent/serious 3 - Routine	1 - Emergency 2 - Urgent/serious 3 - Routine 4 - Very Urgent	The clinical response priorities are insufficient for categorising how urgent/emergency MH services respond to referrals so an additional category of "very urgent" is required.
MHS101Referral	REFERRING CARE PROFESSIONAL STAFF GROUP (MENTAL HEALTH AND COMMUNITY CARE)	Data Item	Amendment	M04 - General Practitioner With A Special Interest A04 - Drama Therapist	M04 - General Practitioner With Extended Roles (GPwER) A04 - Dramatherapist	National Codes changed in Data Dictionary, changed to reflect
MHS201CareContact	CONSULTATION MEDIUM USED	Data Item	Amendment		Online instant messaging	New medium added to the code list to cover online messaging interactions

MHS009Car ePlanAgree ment	CARE PLAN AGREED BY	Data Item	Amendment		16 - Family member or carer with parental responsibility	New code need for more accurate reporting
MHS503Assi gnedCarePr of	TREATMENT FUNCTION CODE (MENTAL HEALTH)	Data Item	Amendment	700 - Learning Disability 710 - Adult Mental illness 713 - Psychotherapy 724 - Perinatal Psychiatry	Addition of: 730 - Neuropsychiatry Service 656 - Clinical Psychology Service  Amend: 700 - Disability Service 710 - Adult Mental Health Service 713 - Medical Psychotherapy Service 724 - Perinatal Mental Health Service	New and renamed codes for more accuracy and clarity in reporting
MHS203Oth erAttend	OTHER PERSON IN ATTENDANCE AT CARE CONTACT	Data Item	Amendment	Advocacy Role 01 - Independent Advocate (Family Member) 02 - Independent Advocate (Independent Person) 03 - Independent Mental Capacity Advocate (IMCA) 04 - Independent Mental Health Advocate (IMHA) 05 - Non Instructed Advocate Non-Advocacy Role 10 - Parent or relative 11 - Friend or neighbour 12 - Care Worker	01 – Independent Advocate (Family Member) 02 - Independent Advocate (Independent Person) 03 - Independent Mental Capacity Advocate (IMCA) 04 - Independent Mental Health Advocate (IMHA) 05 - Non Instructed Advocate 10 - Parent or relative (Non-Advocate) 11 - Friend or neighbour (Non-Advocate) 12 - Care Worker (Non-Advocate)	New codes need for more accurate reporting. The data dictionary is making all national codes make sense in their own right and to allow possible future importing of the code lists all labels must have a valid value. All headings therefore have been removed and to make the description more meaningful the (now) old header is a suffix where appropriate.
MHS103Oth erReasonRe ferral	OTHER REASON FOR REFERRAL (MENTAL HEALTH)	Data Item	Amendment	24 - Neurodevelopmental Conditions, excluding Autism Spectrum Disorder 25 - Suspected Autism Spectrum Disorder 26 - Diagnosed Autism Spectrum Disorder	24 - Neurodevelopmental Conditions, excluding Autism 25 - Suspected Autism 26 - Diagnosed Autism	Autism Spectrum Disorder is an outdated term and has been replaced with Autism

MHS101Referral	PRIMARY REASON FOR REFERRAL (MENTAL HEALTH)	Data Item	Amendment	24 - Neurodevelopmental Conditions, excluding Autism Spectrum Disorder 25 - Suspected Autism Spectrum Disorder 26 - Diagnosed Autism Spectrum Disorder	24 - Neurodevelopmental Conditions, excluding Autism 25 - Suspected Autism 26 - Diagnosed Autism	Autism Spectrum Disorder is an outdated term and has been replaced with Autism

DRAFT

MHS502WardStay	Hospital Bed Type (Mental Health)  MENTAL HEALTH ADMITTED PATIENT CLASSIFICATION	Data Item	Amendment	<p>10 - Acute adult mental health care  11 - Acute older adult mental health care (organic and functional)  12 - Adult Psychiatric Intensive Care Unit (acute mental health care)  13 - Adult Eating Disorders  14 - Mother and baby  15 - Adult Learning Disabilities  16 - Adult Low secure rehabilitation units  17 - Adult High dependency rehabilitation  18 - Adult Long-term high dependency rehabilitation unit  19 - Adult Low secure  20 - Adult Medium secure  21 - Adult High secure  22 - Adult Neuro-psychiatry / Acquired Brain Injury  23 - General Child and Adolescent Mental Health (CAMHS) inpatient - Child (including High Dependency)  24 - General Child and Adolescent Mental Health (CAMHS) inpatient - Adolescent (including High Dependency)  25 - Eating Disorders inpatient - Adolescent (above 12)  26 - Eating Disorders inpatient - Child (12 years and under)</p>	<p>10 - Acute adult mental health care  11 - Acute older adult mental health care (organic and functional)  12 - Adult Psychiatric Intensive Care Unit (acute mental health care)  13 - Adult Eating Disorders  14 - Mother and baby  15 - Adult Learning Disabilities  17 - Adult High dependency rehabilitation  19 - Adult Low secure  20 - Adult Medium secure  21 - Adult High secure  22 - Adult Neuro-psychiatry / Acquired Brain Injury  23 - General child and young person mental health inpatient - Child (including High Dependency)  24 - General child and young person mental health inpatient - Young person (including High Dependency)  25 - Eating Disorders inpatient - Young person (above 12)  26 - Eating Disorders inpatient - Child (12 years and under)  27 - Child and Young Person Low Secure Mental Illness  28 - Child and Young Person Medium Secure Mental Illness  29 - Child Mental Health inpatient services for the Deaf  30 - Child and Young Person Learning Disabilities / Autistic Spectrum Disorder inpatient  31 - Child and Young Person Low Secure Learning Disabilities  32 - Child and Young Person Medium Secure Learning Disabilities  33 - Severe Obsessive Compulsive Disorder and Body Dysmorphic Disorder - Young person  34 - Child and Young Person Psychiatric Intensive Care Unit  35 - Adult continuing care  36 - Adult community rehabilitation</p>	New and renamed codes for more accuracy and clarity in reporting
----------------	--	-----------	-----------	---	--	--

				<p>27 - Child and Young Person Low Secure Mental Illness</p> <p>28 - Child and Young Person Medium Secure Mental Illness</p> <p>29 - Child Mental Health inpatient services for the Deaf</p> <p>30 - Child and Young Person Learning Disabilities / Autistic Spectrum Disorder inpatient</p> <p>31 - Child and Young Person Low Secure Learning Disabilities</p> <p>32 - Child and Young Person Medium Secure Learning Disabilities</p> <p>33 - Severe Obsessive Compulsive Disorder and Body Dysmorphic Disorder - Adolescent</p> <p>34 - Child and Young Person Psychiatric Intensive Care Unit</p> <p>35 - Adult Continuing care unit</p> <p>36 - Adult Community rehabilitation unit</p> <p>37 - Adult Highly specialist inpatient rehabilitation unit</p>	<p>37 - Adult highly specialist high dependency rehabilitation</p> <p>38 - Adult longer term high dependency rehabilitation unit</p> <p>39 - Adult mental health inpatient services for the Deaf</p> <p>40 - Adult personality disorder</p>	
MHS103OtherReasonReferral	OTHER REASON FOR REFERRAL (MENTAL HEALTH)	Data Item	Amendment		<p>Addition of:</p> <p>30 - Behaviours that challenge due to a Learning Disability or Autism</p>	New code needed for more accurate reporting



MHS505RestrictiveIntervention	RESTRICTIVE INTERVENTION REASON	Data Item	Amendment	<p>10 - Prevent a patient being violent to others  11 - Prevent a patient causing serious harm to themselves  12 - Prevent a patient causing serious physical injury to themselves by accident  13 - Lawfully administer medicines or other medical treatment  14 - Facilitate personal care  15 - Facilitate nasogastric feeding  16 - Prevent the patient exhibiting extreme and prolonged over-activity  17 - Prevent the patient exhibiting otherwise dangerous behaviour;  18 - Undertake a search of the patient's clothing or property to ensure the safety of others  19 - Prevent the patient absconding from lawful custody  98 - Other (not listed)  99 - Not Known (Not Recorded)</p>	<p>10 - Prevent a patient being violent to others  11 - Prevent a patient causing serious harm to themselves  12 - Prevent a patient causing serious physical injury to themselves by accident  13 - Lawfully administer medicines or other medical treatment  14 - Facilitate personal care  15 - Facilitate nasogastric feeding  16 - Prevent the patient exhibiting extreme and prolonged over-activity  17 - Prevent the patient exhibiting otherwise dangerous behaviour;  18 - Undertake a search of the patient's clothing or property to ensure the safety of others  19 - Prevent the patient absconding from lawful custody  98 - Other (not listed)  99 - Not Known (Not Recorded)</p>	Code list altered for more accuracy following an NHSE consultation
-------------------------------	---------------------------------	-----------	-----------	---	---	--

### **3.2.11. Updates in line with recent and wider NHS Data Model & Dictionary developments**

DRAFT

Group/ Table	Item Name / Level	Item Type	Item Amend Type	Previous	New	Change Reason(s)
--------------	-------------------	-----------	-----------------	----------	-----	------------------

DRAFT

MHS502WardStay	Hospital Bed Type (Mental Health)	Data Item	Amendment	<p>10 - Acute adult mental health care</p> <p>11 - Acute older adult mental health care (organic and functional)</p> <p>12 - Psychiatric Intensive Care Unit (acute mental health care)</p> <p>13 - Eating Disorders</p> <p>14 - Mother and baby</p> <p>15 - Learning Disabilities</p> <p>16 - Low secure rehabilitation units</p> <p>17 - High dependency rehabilitation</p> <p>18 - Long-term high dependency rehabilitation unit</p> <p>19 - Low secure</p> <p>20 - Medium secure</p> <p>21 - High secure</p> <p>22 - Neuro-psychiatry / Acquired Brain Injury</p> <p>35 - Continuing care unit</p> <p>36 - Community rehabilitation unit</p> <p>37 - Highly specialist inpatient rehabilitation unit</p> <p>23 - General Child and Adolescent Mental Health (CAMHS) inpatient - Child (including High Dependency)</p> <p>24 - "General Child and Adolescent Mental Health (CAMHS) inpatient - Adolescent (including High Dependency)"</p> <p>25 - Eating Disorders inpatient - Adolescent (above 12)</p> <p>26 - Eating Disorders inpatient - Child (12 years and under)</p> <p>27 - Low Secure Mental Illness</p> <p>28 - Medium Secure Mental Illness</p> <p>29 - Child Mental Health inpatient services for the Deaf</p> <p>30 - Learning Disabilities / Autistic Spectrum Disorder inpatient</p> <p>31 - Low Secure Learning Disabilities</p> <p>32 - Medium Secure Learning Disabilities</p> <p>33 - Severe Obsessive Compulsive Disorder and Body Dysmorphic Disorder - Adolescent</p> <p>34 - Psychiatric Intensive Care Unit</p>	<p>10 - Acute adult mental health care</p> <p>11 - Acute older adult mental health care (organic and functional)</p> <p>12 - Adult Psychiatric Intensive Care Unit (acute mental health care)</p> <p>13 - Adult Eating Disorders</p> <p>14 - Mother and baby</p> <p>15 - Adult Learning Disabilities</p> <p>17 - Adult High dependency rehabilitation</p> <p>19 - Adult Low secure</p> <p>20 - Adult Medium secure</p> <p>21 - Adult High secure</p> <p>22 - Adult Neuro-psychiatry / Acquired Brain Injury</p> <p>23 - General child and young person mental health inpatient - Child (including High Dependency)</p> <p>24 - General child and young person mental health inpatient - Young person (including High Dependency)</p> <p>25 - Eating Disorders inpatient - Young person (above 12)</p> <p>26 - Eating Disorders inpatient - Child (12 years and under)</p> <p>27 - Child and Young Person Low Secure Mental Illness</p> <p>28 - Child and Young Person Medium Secure Mental Illness</p> <p>29 - Child Mental Health inpatient services for the Deaf</p> <p>30 - Child and Young Person Learning Disabilities / Autistic Spectrum Disorder inpatient</p> <p>31 - Child and Young Person Low Secure Learning Disabilities</p> <p>32 - Child and Young Person Medium Secure Learning Disabilities</p>	<p>The data dictionary is making all national codes make sense in their own right and to allow possible future importing of the code lists all labels must have a valid value. All headings therefore have been removed and to make the description more meaningful the (now) old header is a prefix.</p>
MENTAL HEALTH ADMITTED PATIENT CLASSIFICATION						

					33 - Severe Obsessive Compulsive Disorder and Body Dysmorphic Disorder - Young person 34 - Child and Young Person Psychiatric Intensive Care Unit 35 - Adult continuing care 36 - Adult community rehabilitation 37 - Adult highly specialist high dependency rehabilitation 38 - Adult longer term high dependency rehabilitation unit 39 - Adult mental health inpatient services for the Deaf 40 - Adult personality disorder	
--	--	--	--	--	---	--

MHS503AssignedCareProfessional	TREATMENT FUNCTION CODE (MENTAL HEALTH)	Data Item	Amendment	319 - Respite care 656 - Clinical Psychology Service 700 - Disability Service 710 - Adult Mental Health Service 711 - Child and Adolescent Psychiatry 712 - Forensic psychiatry 713 - Medical Psychotherapy Service 715 - Old age psychiatry 720 - Eating Disorders 721 - Addiction Services 722 - Liaison Psychiatry 723 - Psychiatric Intensive Care 724 - Perinatal Mental Health Service 725 - Mental Health Recovery and Rehabilitation Service 726 - Mental Health Dual Diagnosis Service 727 - Dementia Assessment Service 730 - Neuropsychiatry Service	319 - Respite Care Service 656 - Clinical Psychology Service 700 - Learning Disability Service 710 - Adult Mental Health Service 711 - Child and Adolescent Psychiatry Service 712 - Forensic Psychiatry Service 713 - Medical Psychotherapy Service 715 - Old Age Psychiatry Service 720 - Eating Disorders Service 721 - Addiction Service 722 - Liaison Psychiatry Service 723 - Psychiatric Intensive Care Service 724 - Perinatal Mental Health Service 725 - Mental Health Recovery and Rehabilitation Service 726 - Mental Health Dual Diagnosis Service 727 - Dementia Assessment Service 730 - Neuropsychiatry Service 348 - Post COVID-19 Syndrome Service	Renamed codes for more accuracy and clarity in reporting, after feedback from data dictionary.  Intellectual Disability Service reverted back to Learning Disability Service and a new code for COVID-19 added.

MHS502WardStay	INTENDED CLINICAL CARE INTENSITY CODE (MENTAL HEALTH)	Data Item	Amendment	<p>Mental Illness</p> <p>51 - For intensive care - specially designated ward for patients needing containment and more intensive management (eg Psychiatric Intensive Care Unit (PICU)). This is not to be confused with intensive nursing where a patient may require one-to-one nursing whilst on a standard ward</p> <p>52 - For short stay - patients intended to stay for less than a year</p> <p>53 - For long stay - patients intended to stay a year or more</p> <p>Learning Disabilities</p> <p>61 - Designated or interim secure unit</p> <p>62 - Patients intending to stay less than a year</p> <p>63 - Patients intending to stay a year or more</p>	<p>51 - Mental Illness intensive care: specially designated ward for Patients needing containment and more intensive management (e.g. Psychiatric Intensive Care Unit (PICU)). This is not to be confused with intensive nursing where Patients may require one to one nursing while on a standard ward</p> <p>52 - Mental Illness short stay: Patients intended to stay less than a year</p> <p>53 - Mental Illness long stay: Patients intended to stay a year or more</p> <p>61 - Learning Disability Patients in a designated or interim secure unit</p> <p>62 - Learning Disability Patients intending to stay less than a year</p> <p>63 - Learning Disability Patients intending to stay a year or more</p>	<p>The data dictionary is making all national codes make sense in their own right and to allow possible future importing of the code lists all labels must have a valid value. All headings therefore have been removed and to make the description more meaningful the (now) old header is a prefix.</p>
----------------	---	-----------	-----------	---	--	---

MHS104RTT	REFERRAL TO TREATMENT PERIOD STATUS	Data Item	Amendment	<p>The first ACTIVITY in a REFERRAL TO TREATMENT PERIOD where the First Definitive Treatment will be a subsequent ACTIVITY</p> <p>10 - First ACTIVITY - first ACTIVITY in a REFERRAL TO TREATMENT PERIOD</p> <p>11 - Active Monitoring end - first ACTIVITY at the start of a new REFERRAL TO TREATMENT PERIOD following Active Monitoring</p> <p>12 - CONSULTANT or NHS Allied Health Professional Service (Referral To Treatment Measurement) referral - the first ACTIVITY at the start of a new REFERRAL TO TREATMENT PERIOD following a decision to refer directly to the CONSULTANT or NHS Allied Health Professional Service (Referral To Treatment Measurement) for a separate condition</p> <p>Subsequent ACTIVITY during a REFERRAL TO TREATMENT PERIOD</p> <p>20 - subsequent ACTIVITY during a REFERRAL TO TREATMENT PERIOD - further ACTIVITIES anticipated</p> <p>21 - transfer to another Health Care Provider - subsequent ACTIVITY by another Health Care Provider during a REFERRAL TO TREATMENT PERIOD anticipated</p> <p>ACTIVITY that ends the REFERRAL TO TREATMENT PERIOD</p> <p>30 - Start of First Definitive Treatment.</p> <p>31 - start of Active Monitoring initiated by the PATIENT</p> <p>32 - start of Active Monitoring initiated by the CARE PROFESSIONAL</p> <p>33 - Did not attend - the PATIENT did not attend the first CARE ACTIVITY after the referral</p> <p>34 - decision not to treat - decision not to treat made or no further contact required</p> <p>35 - PATIENT declined offered treatment</p> <p>36 - PATIENT died before treatment</p>	<p>10 - First activity in a Referral to Treatment Period</p> <p>11 - First activity at the start of a new Referral to Treatment Period following Active Monitoring</p> <p>12 - First activity at the start of a new Referral to Treatment Period following a decision to refer directly to the consultant or NHS Allied Health Professional Service (Referral To Treatment Measurement) for a separate condition</p> <p>20 - Subsequent activity during a Referral to Treatment Period - further activities anticipated</p> <p>21 - Subsequent activity by another Health Care Provider following a transfer to another Health Care Provider during a Referral to Treatment Period anticipated</p> <p>30 - End of the Referral to Treatment Period: Start of First Definitive Treatment</p> <p>31 - End of the Referral to Treatment Period: Start of Active Monitoring initiated by the patient</p> <p>32 - End of the Referral to Treatment Period: Start of Active Monitoring initiated by the care professional</p> <p>33 - End of the Referral to Treatment Period: Did not attend - the patient did not attend the first Care activity after the referral</p> <p>34 - End of the Referral to Treatment Period: Decision not to treat - decision not to treat made or no further contact required</p>	<p>The data dictionary is making all national codes make sense in their own right and to allow possible future importing of the code lists all labels must have a valid value. All headings therefore have been removed and to make the description more meaningful the (now) old header is a prefix.</p>
-----------	-------------------------------------	-----------	-----------	---	--	---



				<p>ACTIVITY that is not part of a REFERRAL TO TREATMENT PERIOD</p> <p>90 - after treatment - First Definitive Treatment occurred previously (e.g. admitted as an emergency from A&amp;E or the activity is after the start of treatment)</p> <p>91 - Active Monitoring - CARE ACTIVITY during Active Monitoring</p> <p>92 - not yet referred - not yet referred for treatment, undergoing diagnostic tests by GENERAL PRACTITIONER before referral</p> <p>98 - not applicable - ACTIVITY not applicable to REFERRAL TO TREATMENT PERIODS</p> <p>ACTIVITY where the REFERRAL TO TREATMENT PERIOD STATUS is not yet known</p> <p>99 - not yet known</p>	<p>35 - End of the Referral to Treatment Period: patient declined offered treatment</p> <p>36 - End of the Referral to Treatment Period: patient died before treatment</p> <p>90 - Not part of a Referral to Treatment Period: After treatment - First Definitive Treatment occurred previously (e.g. admitted as an emergency from A&amp;E or the activity is after the start of treatment)</p> <p>91 - Not part of a Referral to Treatment Period: Care activity during Active Monitoring</p> <p>92 - Not part of a Referral to Treatment Period: Not yet referred for treatment, undergoing diagnostic tests by General Practitioner before referral</p> <p>98 - Not part of a Referral to Treatment Period: activity not applicable to Referral to Treatment Periods</p> <p>99 - Referral to Treatment Period status not yet known</p>	
--	--	--	--	---	--	--

MHS101Referral	SOURCE OF REFERRAL FOR MENTAL HEALTH	Data Item	Amendment	<p>Primary Health Care</p> <p>A1 - General Medical Practitioner Practice</p> <p>A2 - Health Visitor</p> <p>A3 - Other Primary Health Care</p> <p>A4 - Maternity Service</p> <p>Self Referral</p> <p>B1 - Self</p> <p>B2 - Carer/Relative</p> <p>Local Authority and Other Public Services</p> <p>C1 - Social Services</p> <p>C2 - Education Service / Educational Establishment</p> <p>C3 - Housing Service</p> <p>Employer</p> <p>D1 - Employer</p> <p>D2 - Occupational Health</p> <p>Justice System</p> <p>E1 - Police</p> <p>E2 - Courts</p> <p>E3 - Probation Service</p> <p>E4 - Prison</p> <p>E5 - Court Liaison and Diversion Service</p> <p>E6 - Youth Offending Team</p> <p>Child Health</p> <p>F1 - School Nurse</p> <p>F2 - Hospital-based Paediatrics</p> <p>F3 - Community-based Paediatrics</p> <p>Independent/Voluntary Sector</p> <p>G1 - Independent sector - Medium Secure Inpatients</p> <p>G2 - Independent Sector - Low Secure Inpatients</p> <p>G3 - Other Independent Sector Mental Health Services</p> <p>G4 - Voluntary Sector</p> <p>Acute Secondary Care</p> <p>H1 - Accident And Emergency Department</p> <p>H2 - Other secondary care specialty</p> <p>Other Mental Health NHS Trust</p> <p>I1 - Temporary transfer from another Mental Health NHS Trust</p>	<p>A1 - Primary Health Care: General Medical Practitioner Practice</p> <p>A2 - Primary Health Care: Health Visitor</p> <p>A3 - Other Primary Health Care</p> <p>A4 - Primary Health Care: Maternity Service</p> <p>B1 - Self-Referral: Self</p> <p>B2 - Self-Referral: Carer/Relative</p> <p>C1 - Local Authority and Other Public Services: Social Services</p> <p>C2 - Local Authority and Other Public Services: Education Service / Educational Establishment</p> <p>C3 - Local Authority and Other Public Services: Housing Service</p> <p>D1 - Employer</p> <p>D2 - Employer: Occupational Health</p> <p>E1 - Justice System: Police</p> <p>E2 - Justice System: Courts</p> <p>E3 - Justice System: Probation Service</p> <p>E4 - Justice System: Prison</p> <p>E5 - Justice System: Court Liaison and Diversion Service</p> <p>E6 - Justice System: Youth Offending Team</p> <p>F1 - Child Health: School Nurse</p> <p>F2 - Child Health: Hospital-based Paediatrics</p> <p>F3 - Child Health: Community-based Paediatrics</p> <p>G1 - Independent sector - Medium Secure Inpatients</p> <p>G2 - Independent Sector - Low Secure Inpatients</p> <p>G3 - Other Independent Sector Mental Health Services</p> <p>G4 - Voluntary Sector</p>	<p>The data dictionary is making all national codes make sense in their own right and to allow possible future importing of the code lists all labels must have a valid value. All headings therefore have been removed and to make the description more meaningful the (now) old header is a prefix.</p>

				<p>I2 - Permanent transfer from another Mental Health NHS Trust Other M1 - Asylum Services M2 - Telephone or Electronic Access Service M3 - Out of Area Agency M4 - Drug Action Team / Drug Misuse Agency M5 - Jobcentre Plus M6 - Other service or agency M7 - Single Point of Access Service Improving access to psychological therapies N3 - Improving Access to Psychological Therapies Service Internal P1 - Internal Referral</p>	<p>H1 - Acute Secondary Care: Emergency Care Department H2 - Other secondary care specialty H3 – Ambulance Service I1 - Temporary transfer from another Mental Health NHS Trust I2 - Permanent transfer from another Mental Health NHS Trust M1 - Other: Asylum Services M2 - Other: Telephone or Electronic Access Service M3 - Other: Out of Area Agency M4 - Other: Drug Action Team / Drug Misuse Agency M5 - Other: Jobcentre Plus M6 - Other SERVICE or agency M7 - Other: Single Point of Access Service N3 - Improving Access to Psychological Therapies Service P1 - Internal Referral</p>	
MHS101Referral	SOURCE OF REFERRAL FOR MENTAL HEALTH	Data Item	Amendment	H1 - Acute Secondary Care: Accident and Emergency	H1 - Acute Secondary Care: Emergency Care Department	National Codes changed in Data Dictionary, changed to reflect
MHS101Referral	SOURCE OF REFERRAL FOR MENTAL HEALTH	Data Item	Amendment		H3 – Ambulance Service	List amended for more clarity
MHS901StaffDetails	MAIN SPECIALTY CODE (MENTAL HEALTH)	Data Item	Amendment	<p>600 - General Medical Practice 700 - Learning Disability 710 - Adult Mental illness 711 - Child and Adolescent Psychiatry 712 - Forensic psychiatry 713 - Psychotherapy 715 - Old age psychiatry 950 - Nursing Episode 960 - Allied Health Professional Episode</p>	<p>600 - General Medical Practice 700 - Intellectual Disability 710 - Adult Mental illness 711 - Child and Adolescent Psychiatry 712 - Forensic Psychiatry 713 - Psychotherapy 715 - Old age psychiatry 950 - Nursing 960 - Allied Health Professional</p>	Renamed codes for more accuracy and clarity in reporting, after feedback from data dictionary

MHS501HospProvSpell	ADMISSION METHOD CODE (HOSPITAL PROVIDER SPELL)	Data Item	Amendment	2a - Emergency Admission: Accident and Emergency Department of another provider where the patient had not been admitted 21 - Emergency Admission: Accident and emergency or dental casualty department of the Health Care Provider	2a - Emergency Admission: Emergency Care Department of another provider where the patient had not been admitted 21 - Emergency Admission: Emergency Care Department or dental casualty department of the Health Care Provider	National Codes changed in Data Dictionary, changed to reflect

DRAFT

MHS501HospProvSpell	ADMISSION METHOD CODE (HOSPITAL PROVIDER SPELL)	Data Item	Amendment	<p>Elective Admission</p> <p>11 - Waiting list</p> <p>12 - Booked</p> <p>13 - Planned</p> <p>Emergency Admission</p> <p>21 - Accident and emergency, or dental casualty department of the Health Care Provider</p> <p>22 - General Practitioner after a request has been made direct to the Health Care Provider (i.e. not through a bed bureau) by a General Practitioner or deputy</p> <p>23 - Bed Bureau</p> <p>24 - Consultant clinic of this or another Health Care Provider</p> <p>25 - Admission via Mental Health Crisis Resolution Team</p> <p>2A - Accident and Emergency Department of another provider where the PATIENT had not been admitted</p> <p>2B - Transfer of an admitted PATIENT from another Hospital Provider in an emergency</p> <p>2D - Other emergency admission</p> <p>Other Admission</p> <p>81 - Transfer of any admitted patient from other hospital provider other than in an emergency. This does not include admissions to high security psychiatric hospitals</p> <p>98 - Not applicable</p> <p>99 - Not Known: a validation error</p>	<p>11 - Elective Admission: Waiting list</p> <p>12 - Elective Admission: Booked</p> <p>13 - Elective Admission: Planned</p> <p>21 - Emergency Admission: Accident and emergency or dental casualty department of the Health Care Provider</p> <p>22 - Emergency Admission: General Practitioner: after a request for immediate admission has been made direct to a Hospital Provider, i.e. not through a Bed bureau, by a General Practitioner or deputy</p> <p>23 - Emergency Admission: Bed bureau</p> <p>24 - Emergency Admission: Consultant Clinic, of this or another Health Care Provider</p> <p>25 - Emergency Admission: Admission via Mental Health Crisis Resolution Team</p> <p>2A - Emergency Admission: Accident and Emergency Department of another provider where the patient had not been admitted</p> <p>2B - Emergency Admission: Transfer of an admitted patient from another Hospital Provider in an emergency</p> <p>2D - Emergency Admission: Other emergency admission</p> <p>81 - Other Admission: Transfer of any admitted patient from other Hospital Provider other than in an emergency</p> <p>98 - Not applicable</p> <p>99 - Not Known</p>	<p>The data dictionary is making all national codes make sense in their own right and to allow possible future importing of the code lists all labels must have a valid value. All headings therefore have been removed and to make the description more meaningful the (now) old header is a prefix.</p>
---------------------	---	-----------	-----------	---	---	---

MHS501HospProvSpell			Amendment	Hospital Provider Spell Number	Hospital Provider Spell Identifier	In line with Data Dictionary change all references to Hospital Provider Spell Number have been replaced with Hospital Provider Spell Identifier
---------------------	--	--	-----------	--------------------------------	------------------------------------	---

DRAFT

### 3.2.12. Change control

The *Technical Output Specification* fully defines the individual changes applied to the data set, with each change logged in the 'Summary of Changes' tab. This *Change Specification* therefore represents a summary of changes included in MHSDS v5.0 which should be read in conjunction with the 'Summary of Changes' tab in the *Technical Output Specification* to fully understand the changes to the data set.

N.B. The latest version of the Technical Output Specification is published with other supporting documents on the NHS Digital [MHSDS Specifications and Guidance webpage](#)<sup>ii</sup>.

## Endnotes

---

<sup>i</sup> <https://digital.nhs.uk/data-and-information/information-standards/information-standards-and-data-collections-including-extractions/publications-and-notifications/standards-and-collections>

<sup>ii</sup> <https://digital.nhs.uk/data-and-information/data-collections-and-data-sets/data-sets/mental-health-services-data-set/mental-health-services-data-set-specifications-and-guidance>