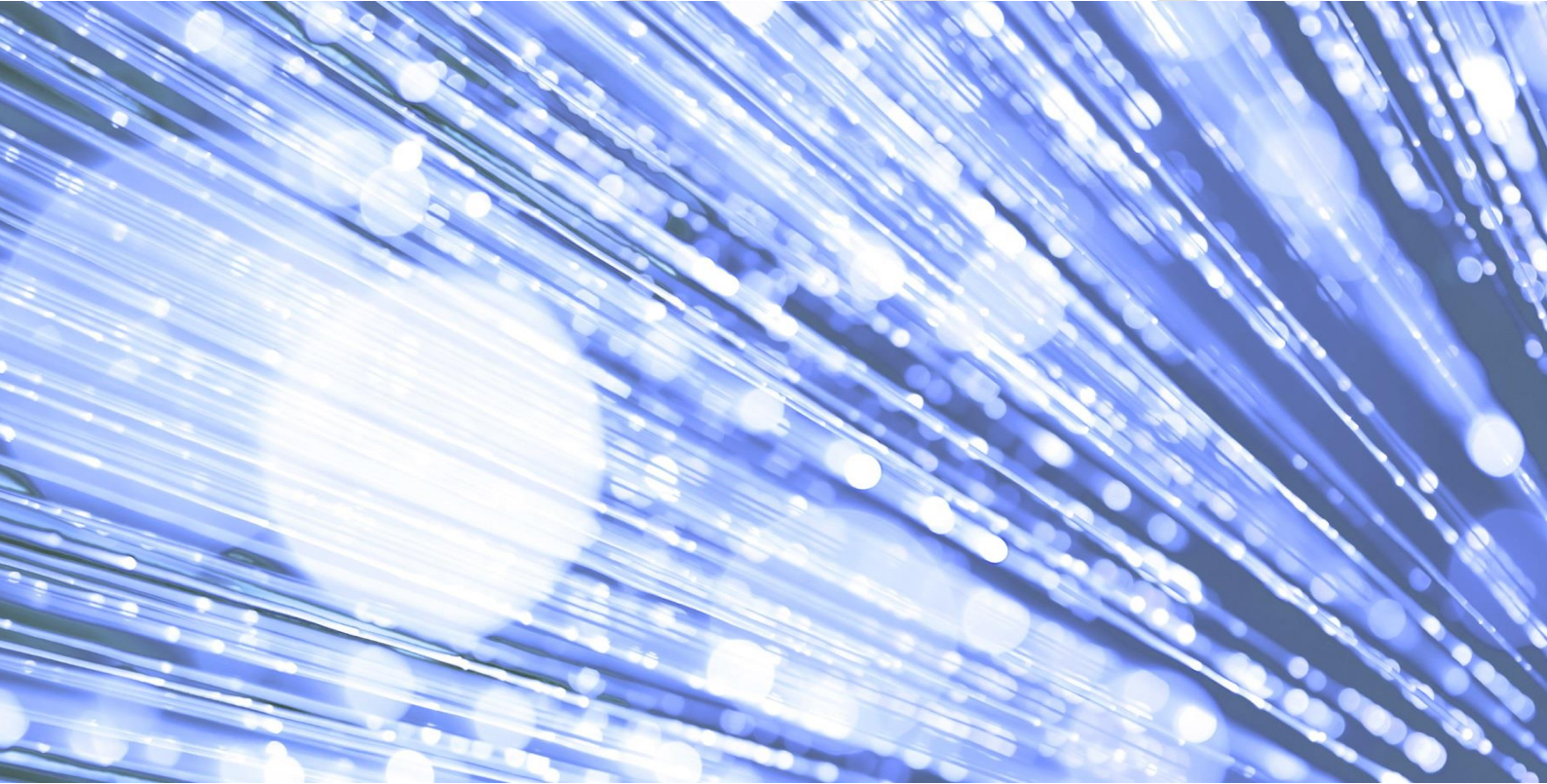


# Change Specification

## Mental Health Services Data Set v6.0

INITIAL DRAFT – FINAL VERSION TBC

Published August 2022



**Information and technology**  
**for better health and care**

Copyright ©2021 Health and Social Care Information Centre

The Health and Social Care Information Centre is a non-departmental body created by statute, also known as NHS Digital.

## Data Alliance Partnership Board

Acting on behalf of the Data Alliance Partnership Board (DAPB), which holds delegated authority from the Secretary of State for Health and Social Care, the Data Alliance Partnership Sub Board (DAPSB) has approved a change to an existing information standard for publication under [section 250 of the Health and Social Care Act 2012](#).

Assurance that this information standard meets the requirements of the Act and is appropriate for the use specified in the specification document has been provided by the Data Standards Assurance Service (DSAS) and approved by the Data Alliance Partnership Board (DAPB).

This information standard comprises the following documents:

- Requirements Specification
- Implementation Guidance
- Change Specification
- Technical Output Specification (TOS).

An Information Standards Notice (DCB0011 Amd 29/**TBC**) has been issued as a notification of use and implementation timescales. Please read this alongside the documents for the standard.

The controlled copies of these documents can be found on the [NHS Digital website](#). Any copies held outside of that area, in whatever format (e.g. paper, email attachment), are considered to have passed out of control and should be checked for currency and validity.

Date of publication: **20 July 2021**

Document filename:	<b>DCB0011_MHSDS_v6.0_Change_Specification.docx</b>		
Project / Programme	<b>Data Standards and New Data Collections</b>	Project	<b>Mental Health Services Data Set</b>
Sponsor	<b>Shamim Rahman</b>	Status	<b>Draft</b>
Developer	<b>Amy Wilson</b>	Version	<b>0.2</b>
Author	<b>Julia Webb</b>	Version issue date	<b>22/07/2022</b>

This information standard (DCB0011) has been approved for publication by NHS England under [section 250 of the Health and Social Care Act 2012](#).

Assurance that this information standard meets the requirements of the Act and is appropriate for the use specified in the specification document has been provided by the Data Standards Assurance Service (DSAS) and approved by the Data Alliance Partnership Board (DAPB).

This information standard comprises the following documents:

- Requirements Specification
- Change Specification
- Data Set Specification
- Implementation Guidance.

An Information Standards Notice DCB0011 Amd 29/[TBC] has been issued as a notification of use and implementation timescales. Please read this alongside the documents for the standard.

The controlled copies of these documents can be found on the [NHS Digital website](#). Any copies held outside of that area, in whatever format (e.g. paper, email attachment), are considered to have passed out of control and should be checked for currency and validity.



This information is licensed under the Open Government Licence v3.0. To view this licence, visit <http://www.nationalarchives.gov.uk/doc/open-government-licence/> or write to the Information Policy Team, The National Archives, Kew, Richmond, Surrey, TW9 4DU.

## Glossary of Terms

A full Glossary of Terms for the MHSDS Information Standard can be found within the [Requirements Specification](#).

# Document management

## Revision History

Version	Date	Summary of Changes
0.1	25/02/2020	Blank document created
0.2	23/06/2022	First draft for DSAS comments
0.3		Minor amendments following DSAS review
0.4	22/07/2022	Review by AW
0.5		First draft for Public Consultation

## Reviewers

This document must be reviewed by the following people:

Reviewer name	Title / Responsibility	Date	Version
Amy Wilson	Data Set Development Lead	23/06/2022	V0.2

## Approved by

This document must be approved by the following people:

Name	Title	Date	Version
Cher Cartwright	Information Lead Manager for Mental Health and Surveys		V2.0
Tom Latham	Technical Manager, Data Set Development Service		V2.0

# Contents

## Contents

<b>1</b>	<b>Overview</b>	<b>7</b>
1.1	Summary	7
1.2	Supporting documents	12
1.3	Related standards	12
<b>2</b>	<b>Background and justification for release</b>	<b>13</b>
<b>3</b>	<b>Detail of changes</b>	<b>14</b>
3.1	Removed data tables and their associated data items	14
3.1.1	MHS013 Mental Health Currency Model	14
3.1.2	MHS107 Medication Prescription (subject to consultation)	14
3.1.3	MHS701 Care Programme Approach (CPA) Care Episode (subject to consultation)	14
3.1.4	MHS702 Care Programme Approach (CPA) Review (subject to consultation)	15
3.1.5	MHS801 Clustering Tool Assessment	15
3.1.6	MHS802 Coded Scored Assessment (Clustering Tool)	16
3.1.7	MHS803 Care Cluster	16
3.1.8	MHS804 Five Forensic Pathways	17
3.2	Addition of new data tables and associated data items	17
3.2.1	MHS205 Self-Directed Digital Intervention	17
3.2.2	MHS206 Staff Activity	18
3.2.3	MHS902 Service or Team Details	18
3.2.4	MHS903 Ward Details	18
3.3	Addition of new individual data items	19
3.4	Relocation and replacement of data items	20
3.4.1	Relocation of data items	20
3.4.2	Replacement of data items	20
3.5	Changes in mandate	21
3.5.1	MHS104 Referral to Treatment (RTT) table	21
3.6	Changes to align with other data sets	22
3.6.1	SNOMED CT Expressions format changes	22
3.6.2	Other format updates	25
3.7	Updates in line with recent and wider NHS Data Model & Dictionary developments.	25
3.7.1	TOS-wide updates to definitions	25

---

3.7.2	Definition of Mental Health Delayed Discharge	25
3.7.3	Additional NHS Digital Data Model and Dictionary changes	26
3.8	Maintenance updates	26
3.9	Change control	26
<b>4</b>	<b>Appendix 1: Removal of pilot table - MHS107 Medication Prescription</b>	<b>27</b>

---

# 1 Overview

This product precisely defines the patient level Mental Health Services Data Set (MHSDS) standard. The Summary section below describes the standard; the Requirements and Conformance Criteria sections explain what is required of care providers and systems to conform to the standard, and how conformance is tested.

This document is the formal definition of the standard.

## 1.1 Summary

Standard	
<b>Standard Number</b>	DCB0011
<b>Standard Title</b>	Mental Health Services Data Set (MHSDS)
<b>Description</b>	
<p>The MHSDS is a patient level, output based, secondary uses data set which aims to deliver robust, comprehensive, nationally consistent and comparable person-based information for children, young people and adults who are in contact with services for mental health and wellbeing, Learning Disability, autism or other neurodevelopmental conditions.</p> <p>It covers services located in England or located outside England but treating patients commissioned by an English Integrated Care Board (ICB) or NHS England specialised commissioner or an NHS-led Provider Collaborative.</p> <p>As a secondary uses data set it re-uses clinical and operational data for purposes other than direct patient care, for example: commissioning, service improvement and service design. It defines the data items, definitions and associated value sets extracted or derived from local information systems.</p>	<p>The MHSDS is a patient level, output based, secondary uses data set which aims to deliver robust, comprehensive, nationally consistent and comparable person-based information for children, young people and adults who are in contact with services for mental health and wellbeing, Learning Disability, autism or other neurodevelopmental conditions.</p> <p>It covers services located in England or located outside England but treating patients commissioned by an English Integrated Care Board (ICB) or NHS England specialised commissioner or an NHS-led Provider Collaborative.</p> <p>As a secondary uses data set it re-uses clinical and operational data for purposes other than direct patient care, for example: commissioning, service improvement and service design. It defines the data items, definitions and associated value sets extracted or derived from local information systems.</p>
<b>In Scope</b>	
<p>All activity relating to patients of any age who receive care for a suspected or diagnosed mental health and wellbeing need, Learning Disability, autism or other neurodevelopmental conditions is within scope of the MHSDS.</p> <p>It may be that the person has:</p> <p>A mental health need or is being supported for their mental wellbeing including;</p>	<p>All activity relating to patients of any age who receive care for a suspected or diagnosed mental health and wellbeing need, Learning Disability, autism or other neurodevelopmental conditions is within scope of the MHSDS.</p> <p>It may be that the person has:</p>

<b>Standard</b>	
	<ul style="list-style-type: none"> <li>A mental health need or is being supported for their mental wellbeing including;</li> </ul>
<p><b>Dataset submission requirements by location and funding source</b></p> <p>Record level data submission requirements for each patient accessing services, based on location and funding source, are as follows;</p> <p><b>Services in England:</b></p> <ul style="list-style-type: none"> <li>If the patient is wholly funded by the NHS – data submission for that patient is mandatory.</li> <li>If the patient is partially funded by the NHS – data submission for that patient is mandatory.</li> <li>If the patient is wholly funded by any means that is not NHS – data submission is optional.</li> </ul> <p><b>Services outside England:</b></p> <p>If the patient is attending a service located outside England, but commissioned by an English ICB, NHS England specialised commissioner or an NHS-led Provider Collaborative, data submission is optional but may be a requirement of the commissioning arrangements.</p> <p>An providers that are near English borders that routinely provide services to English patients and are claiming funding from English commissioners.</p>	
<b>Examples of activity in scope</b>	<p>The data set scope includes, but is not limited to, the examples below.</p> <p><b>Service users</b></p> <p>Any patients who receive care for a suspected or diagnosed mental health and wellbeing need, Learning Disability or autism.</p> <p><b>Family Members, Carers or Partners</b></p> <p>Any family member, carer or partner (of the patient described above) who receives family, carer or partner interventions.</p> <p><b>Organisation Types</b></p> <p>Any service providers that provide assessments or care for people with a suspected or diagnosed mental health and wellbeing need, Learning Disability or autism including;</p> <ul style="list-style-type: none"> <li>NHS Mental Health Trusts</li> <li>NHS Acute Trusts<sup>1</sup></li> <li>NHS Community Health Trusts<b>Error! Bookmark not defined.</b></li> <li>Independent and voluntary sector healthcare providers and any other qualified providers offering a service</li> </ul>

<sup>1</sup> Where there is direct provision of specialist secondary mental health, Learning Disabilities, or autism services



<b>Standard</b>	
	<p>model that includes NHS funded and non-NHS funded patients <b>Error! Bookmark not defined.</b></p> <p><b>Service Types</b></p> <p>The ‘Other Service or Team Type’ and ‘Mental Health Admitted Patient Classification’ data items within tables MHS102 and MHS903 respectively, and as defined in the MHSDS Technical Output Specification (TOS), attempt to define a national list of in-scope community and inpatient service types respectively for the MHSDS and in doing so provides examples of the services included in the scope. However, these lists may not be comprehensive considering evolving models of care delivery.</p> <p>Services covered by the data set scope but not appearing in these data item lists must identify themselves against the most appropriate code available.</p> <p>The following service types are also included within the scope;</p> <ul style="list-style-type: none"> <li>• NHS commissioned mental health services delivered within or to support primary care (excluding adult IAPT)</li> <li>• <a href="#">New models of community mental health services</a> integrated with primary care</li> </ul> <p><b>Departments</b></p> <p>The standard must be read and used by all heads of mental health, learning disabilities and autism services, and other clinical and support services, including community services, that have an active involvement in delivering secondary mental health care.</p> <p><b>Professionals</b></p> <p>The standard applies to all professions working in or supporting mental health, learning disabilities and autism services and other services offering secondary mental health care including community services. The MHSDS Technical Output Specification (TOS) provides an indication of the care professionals that are within the scope of this information standard (see MHS901 Staff Details table).</p> <p><b>IT Systems</b></p> <p>The standard predominantly, but not exclusively, relates to clinical systems designed to support mental health, learning disabilities and autism services, Patient Administration Systems (PAS) and Electronic Patient Records (EPR).</p>
<b>IG and Linkage</b>	<p>The data held in the MHSDS will be made available within NHS Digital for analysis, and also for other arm’s-length bodies, NHS-funded mental health service providers and commissioners and the wider mental health community, to</p>

Standard	
	<p>support research and innovation and understand the impact of mental health care on patient outcomes and experiences.</p> <p>Requests for data from the MHSDS will be managed through NHS Digital's Clear Data Access Tools and Data Access Request Service (DARS).</p> <p>Information will be published in line with NHS Digital's duty to publish under section 260(1) of the Health and Social Care Act 2012, unless it falls within section 260(2) of the Act.</p> <p>Mental health data may also be linked to data held by NHS Digital from various other data sets and collections to provide richer information and enhance existing and develop new publications, and to respond to requests for data and information. More information about the data sets and collections that NHS Digital hold and that may be used for linkage can be found on the <a href="#">NHS Digital Data Collections and Data Sets webpage</a>.</p> <p>Mental health data may also be linked to other data sets held by external bodies including Public Health England, NHS England and other researchers.</p>

Release	
<b>Release Number</b>	Amd 29/[TBC]
<b>Release Title</b>	Version 6.0
<b>Description</b>	<ul style="list-style-type: none"> <li>• Removal of data items and tables that are no longer required within the data set including the Pilot Currency table, Care Programme Approach (CPA) tables (subject to consultation) and Care Cluster tables</li> <li>• Addition of new data tables to capture ward details, staff details and service details so that this information is only flowed as one record per service, rather than being connected to a patient</li> <li>• Addition of a new Self-Directed Digital Intervention table to identify where services are supporting patients to use these interventions as part of their care.</li> <li>• Enable linkage with the Electronic Prescribing and Medicines Administration (EPMA) data set to flow prescription data</li> <li>• Change to mandation status for the MHS104 Referral to Treatment (RTT) table</li> <li>• Relocation of data items based on feedback and consultation</li> <li>• Updates to names and definitions to align with other data sets</li> <li>• Updates in line with recent and wider NHS Data Model &amp; Dictionary developments.</li> </ul>

Release	
<b>Implementation Completion Date</b>	<p><b>System Conformance</b></p> <p>From [DATE TBC] mental health systems <b>MUST</b> be fully conformant with this standard.</p> <p><b>Health and Care Organisations</b></p> <p>From [DATE TBC] providers of mental health, learning disabilities and autism services as defined in this Information Standard <b>MUST</b> be able to collect the information as defined in the Technical Output Specification for local use.</p> <p>From [DATE TBC] providers of NHS funded mental health, learning disabilities and autism services <b>MUST</b> begin submitting MHSDS submissions in accordance with this standard.</p>
<b>Full Conformance Date</b>	[DATE TBC]

## 1.2 Supporting documents

This document should be read in conjunction with the following:

Ref #	Title
1	MHSDS Requirements Specification
2	MHSDS Technical Output Specification
3	MHSDS Implementation Guidance
4	MHSDS User Guidance
5	NHS Data Model and Dictionary Change Request
6	MHSDS Data Model
7	MHSDS Enhanced Technical Output Specification

Please see section 2.4 of the Implementation Guidance for a full list and descriptions of each related document listed above and where they can be found.

## 1.3 Related standards

Reference	Title
DCB1069	<a href="#">Community Services Data Set (CSDS)</a>
DCB1513	<a href="#">Maternity Services Data Set (MSDS)</a>
DCB2007	<a href="#">Assuring Transformation</a>
DCB1605	<a href="#">Accessible Information</a>
ISB0149	<a href="#">NHS Number</a>
SCCI0034	<a href="#">SNOMED CT</a>
SCCI0021	<a href="#">International Statistical Classification of Diseases and Health Related Problems (ICD10) 5<sup>th</sup> Edition</a>
DAPB0092	<a href="#">Commissioning Data Sets (CDS)</a>
DAPB0090	<a href="#">Health and Social Care Organisation Reference Data</a>
DCB2094	<a href="#">Sexual Orientation Monitoring</a>
DCB0092-2062	<a href="#">Commissioning Data Sets (CDS) Version 6.2.3: Emergency Care Data Set (ECDS)</a>
DCB3017	<a href="#">Overseas Visitor Charging Category (OVCC)</a>
DAPB1520	<a href="#">Improving Access to Psychological Therapies Data Set</a>

Further details regarding the above standards can be found on the [DAPB Standards and Collections webpage](#)<sup>2</sup>. This webpage also contains a list of all current DAPB (Data Alliance Partnership Board), previously known as both DCB (Data Coordination Board), SCCI (Standardisation Committee for Care Information) and Information Standards Board (ISB) standards and collections.

<sup>2</sup> <https://digital.nhs.uk/data-and-information/information-standards/information-standards-and-data-collections-including-extractions/publications-and-notifications/standards-and-collections>

## 2 Background and justification for release

The MHSDS applies to, and is used by, a wide range of stakeholders for various secondary uses purposes. As such, the MHSDS data set is regularly reviewed and updated in response to changes in policy and to ensure that stakeholders' requirements continue to be met with minimal burden for data submitters.

NHS Digital maintain the content of the data set through consultation with these stakeholders, which include various sections of NHS England (NHSE), Department of Health and Social Care (DHSC), Care Quality Commission (CQC), service providers, IT system suppliers and commissioners.

Changes are required to the MHSDS v6.0 to ensure that the data set remains fit for purpose. The following amendments are required in response to changes in clinical practice or coding, changes to policy requirements, changes to the NHS Data Model and Dictionary in light of other information standards, and requests for amendments by care providers or system suppliers.

A maintenance strategy has been agreed with the Mental Health Data and Information Programme Board for NHS Digital to facilitate annual updates of the data set. This release represents the third annual update in this development cycle. Please see section 6 of the Implementation Guidance for full details of the maintenance strategy.

Further details on these drivers and justification for the changes being made to the data set are outlined below.

## 3 Detail of changes

This section provides additional detail in relation to the individual changes made to the data set in support of the high-level drivers. The TOS fully defines the individual changes applied to the data set, with each change logged in the 'Change Control' tab.

### 3.1 Removed data tables and their associated data items

This section details the removal of the pilot Mental Health Currency Model table, the Care Programme Approach tables and the Care Cluster tables and their respective data items.

These changes were made to reduce burden by removing data fields which are no longer included in national policy and are no longer required for national secondary uses.

A total of 8 tables were removed, containing 37 data items in total, all of which were subject to consultation.

#### 3.1.1 MHS013 Mental Health Currency Model

**Change reason:** removal of pilot currency table at the request of the Mental Health programme team at NHSE, no longer part of national policy.

Data table name	Amend Type	Data Item name
MHS013 Mental Health Currency Model	Removal	LOCAL PATIENT IDENTIFIER (EXTENDED)
MHS013 Mental Health Currency Model	Removal	MENTAL HEALTH RESOURCE GROUP TYPE (SNOMED CT)
MHS013 Mental Health Currency Model	Removal	START DATE (MENTAL HEALTH RESOURCE GROUP)
MHS013 Mental Health Currency Model	Removal	END DATE (MENTAL HEALTH RESOURCE GROUP)

#### 3.1.2 MHS107 Medication Prescription (subject to consultation)

**Change reason:** to enable linkage with the Electronic Prescribing and Medicines Administration (ePMA) data set. This table will be removed if the linkage is achieved post-submission. For further information regarding the purpose of this change, please see [Appendix 1](#).

Data table name	Amend Type	Data Item name
MHS107 Medication Prescription	Removal	SERVICE REQUEST IDENTIFIER
MHS107 Medication Prescription	Removal	PRESCRIPTION IDENTIFIER
MHS107 Medication Prescription	Removal	PRESCRIPTION DATE (MEDICATION)
MHS107 Medication Prescription	Removal	PRESCRIPTION TIME (MEDICATION)

#### 3.1.3 MHS701 Care Programme Approach (CPA) Care Episode (subject to consultation)

**Change reason:** removal of tables at the request of the Mental Health programme team at NHSE, no longer part of national policy.

Data table name	Amend Type	Data Item name
MHS701 Care Programme Approach (CPA) Care Episode	Removal	CARE PROGRAMME APPROACH CARE EPISODE IDENTIFIER
MHS701 Care Programme Approach (CPA) Care Episode	Removal	LOCAL PATIENT IDENTIFIER (EXTENDED)
MHS701 Care Programme Approach (CPA) Care Episode	Removal	START DATE (CARE PROGRAMME APPROACH CARE)
MHS701 Care Programme Approach (CPA) Care Episode	Removal	END DATE (CARE PROGRAMME APPROACH CARE)

### 3.1.4 MHS702 Care Programme Approach (CPA) Review (subject to consultation)

**Change reason:** removal of tables at the request of the Mental Health programme team at NHSE, no longer part of national policy.

Data table name	Amend Type	Data Item name
MHS702 Care Programme Approach (CPA) Review	Removal	CARE PROGRAMME APPROACH CARE EPISODE IDENTIFIER
MHS702 Care Programme Approach (CPA) Review	Removal	CARE PROGRAMME APPROACH REVIEW DATE
MHS702 Care Programme Approach (CPA) Review	Removal	CARE PROFESSIONAL LOCAL IDENTIFIER

### 3.1.5 MHS801 Clustering Tool Assessment

**Change reason:** removal of tables at the request of the Mental Health programme team at NHSE, no longer part of national policy.

Data table name	Amend Type	Data Item name
MHS801 Clustering Tool Assessment	Removal	LEARNING DISABILITIES CARE CLUSTER CODE (INITIAL)
MHS801 Clustering Tool Assessment	Removal	FORENSIC LEARNING DISABILITIES CARE CLUSTER CODE (INITIAL)
MHS801 Clustering Tool Assessment	Removal	CLUSTERING TOOL ASSESSMENT IDENTIFIER
MHS801 Clustering Tool Assessment	Removal	LOCAL PATIENT IDENTIFIER (EXTENDED)
MHS801 Clustering Tool Assessment	Removal	CLUSTERING TOOL ASSESSMENT CATEGORY
MHS801 Clustering Tool Assessment	Removal	ASSESSMENT TOOL COMPLETION DATE
MHS801 Clustering Tool Assessment	Removal	ASSESSMENT TOOL COMPLETION TIME

Data table name	Amend Type	Data Item name
MHS801 Clustering Tool Assessment	Removal	ASSESSMENT TOOL COMPLETION TIMESTAMP
MHS801 Clustering Tool Assessment	Removal	CLUSTERING TOOL ASSESSMENT REASON
MHS801 Clustering Tool Assessment	Removal	ASSESSMENT TOOL COMPLETION DATE
MHS801 Clustering Tool Assessment	Removal	ASSESSMENT TOOL COMPLETION TIME
MHS801 Clustering Tool Assessment	Removal	CLUSTERING TOOL ASSESSMENT REASON
MHS801 Clustering Tool Assessment	Removal	MENTAL HEALTH CARE CLUSTER SUPER CLASS CODE
MHS801 Clustering Tool Assessment	Removal	ADULT MENTAL HEALTH CARE CLUSTER CODE (INITIAL)

### 3.1.6 MHS802 Coded Scored Assessment (Clustering Tool)

**Change reason:** removal of tables at the request of the Mental Health programme team at NHSE, no longer part of national policy.

Data table name	Amend Type	Data Item name
MHS802 Coded Scored Assessment (Clustering Tool)	Removal	CLUSTERING TOOL ASSESSMENT IDENTIFIER
MHS802 Coded Scored Assessment (Clustering Tool)	Removal	CODED ASSESSMENT TOOL TYPE (SNOMED CT EXPRESSION)
MHS802 Coded Scored Assessment (Clustering Tool)	Removal	PERSON SCORE

### 3.1.7 MHS803 Care Cluster

**Change reason:** removal of tables at the request of the Mental Health programme team at NHSE, no longer part of national policy.

Data table name	Amend Type	Data Item name
MHS803 Care Cluster	Removal	LEARNING DISABILITIES CARE CLUSTER CODE (FINAL)
MHS803 Care Cluster	Removal	FORENSIC LEARNING DISABILITIES CARE CLUSTER CODE (FINAL)
MHS803 Care Cluster	Removal	CLUSTERING TOOL ASSESSMENT IDENTIFIER
MHS803 Care Cluster	Removal	START DATE (CARE CLUSTER ASSIGNMENT PERIOD)
MHS803 Care Cluster	Removal	START TIME (CARE CLUSTER ASSIGNMENT PERIOD)



MHS803 Care Cluster	Removal	ADULT MENTAL HEALTH CARE CLUSTER CODE (FINAL)
MHS803 Care Cluster	Removal	CHILD AND ADOLESCENT MENTAL HEALTH NEEDS BASED GROUPING CODE
MHS803 Care Cluster	Removal	FORENSIC MENTAL HEALTH CARE CLUSTER CODE (FINAL)
MHS803 Care Cluster	Removal	END DATE (CARE CLUSTER ASSIGNMENT PERIOD)
MHS803 Care Cluster	Removal	END TIME (CARE CLUSTER ASSIGNMENT PERIOD)

### 3.1.8 MHS804 Five Forensic Pathways

**Change reason:** removal of tables at the request of the Mental Health programme team at NHSE, no longer part of national policy.

Data table name	Amend Type	Data Item name
MHS804 Five Forensic Pathways	Removal	LOCAL PATIENT IDENTIFIER (EXTENDED)
MHS804 Five Forensic Pathways	Removal	FIVE FORENSIC PATHWAYS ASSESSMENT DATE
MHS804 Five Forensic Pathways	Removal	FIVE FORENSIC PATHWAYS ASSESSMENT REASON
MHS804 Five Forensic Pathways	Removal	FIVE FORENSIC PATHWAYS CODE

## 3.2 Addition of new data tables and associated data items

A total of 4 new data tables have been introduced for v6.0 of the MHSDS as outlined below.

The new tables will capture Self-Directed Digital Interventions, Ward Details, Staff Details and Service Details. The purpose of the detail tables is to enable the information to be flowed as one record per service, rather than being connected to a patient.

### 3.2.1 MHS205 Self-Directed Digital Intervention

**Change reason:** Request from the Mental Health programme team at NHS England. Additional table to support self-directed digital interventions

Data table name	Amend Type	Data Item Name
MHS205 Self-Directed Digital Intervention	Addition	Service Request Identifier
MHS205 Self-Directed Digital Intervention	Addition	Organisation Identifier (Digital Intervention provider)
MHS205 Self-Directed Digital Intervention	Addition	Start Date (Digital Intervention)

Data table name	Amend Type	Data Item Name
MHS205 Self-Directed Digital Intervention	Addition	End Date (Digital Intervention)
MHS205 Self-Directed Digital Intervention	Addition	Consultation Mechanism (Digital Intervention)
MHS205 Self-Directed Digital Intervention	Addition	Coded procedure (SNOMED CT expression) TBC

### 3.2.2 MHS206 Staff Activity

**Change reason:** A new table to record the staff activity. As requested from the Mental Health programme team at NHSE.

Group/ Table	Amend Type	Data Item Name
MHS206 Staff Activity	Addition	CARE ACTIVITY IDENTIFIER
MHS206 Staff Activity	Addition	CARE PROFESSIONAL LOCAL IDENTIFIER

### 3.2.3 MHS902 Service or Team Details

**Change reason:** New table to capture details about the service. Developed from an initial requirement from the Mental Health programme team at NHS England to capture the intended age group of the service or team.

Group/ Table	Amend Type	Data Item Name
MHS902 Service or Team Details	Addition	CARE PROFESSIONAL TEAM LOCAL IDENTIFIER
MHS902 Service or Team Details	Relocation	SERVICE OR TEAM TYPE REFERRED TO (MENTAL HEALTH)
MHS902 Service or Team Details	Addition	SERVICE OR TEAM INTENDED AGE GROUP

### 3.2.4 MHS903 Ward Details

**Change reason:** New table to capture details about the ward. Nine data items relocated from the Ward Stay table and one new data item included for linkage. This table is being introduced in other data sets and is being introduced in MHSDS for consistency and to enable details about the ward to flow without being connected to a patient.

There is one new data item – Local Ward Identifier, and all the other data items in this table are being relocated from the MHS502 Ward Stay table

Group/ Table	Amend Type	Data Item Name
MHS903 Ward Details	Addition	LOCAL WARD IDENTIFIER
MHS903 Ward Details	Relocation	ORGANISATION SITE IDENTIFIER (OF TREATMENT)
MHS903 Ward Details	Relocation	WARD INTENDED SEX OF PATIENTS

MHS903 Ward Details	Relocation	WARD INTENDED CLINICAL CARE INTENSITY (MENTAL HEALTH)
MHS903 Ward Details	Relocation	INTENDED AGE GROUP (MENTAL HEALTH)
MHS903 Ward Details	Relocation	WARD SETTING TYPE (MENTAL HEALTH)
MHS903 Ward Details	Relocation	WARD SECURITY LEVEL
MHS903 Ward Details	Relocation	LOCKED WARD INDICATOR
MHS903 Ward Details	Relocation	MENTAL HEALTH ADMITTED PATIENT CLASSIFICATION
MHS903 Ward Details	Relocation	SPECIALISED MENTAL HEALTH SERVICE CATEGORY CODE

### 3.3 Addition of new individual data items

A list of new data items that were not added as part of a table, are listed below.

Group/ Table	Amend Type	Data Item Name	Change reason
MHS004 Employment Status	Addition	PATIENT EMPLOYMENT CONTRACT TYPE	To provide an option to record whether a patient is on a zero hours contract in the Employment Status table.
MHS005 Patient Indicators	Addition	INDEPENDENT MENTAL CAPACITY ADVOCATE ASSIGNED	To indicate whether the patient has been assigned an Independent Mental Capacity Advocate (IMCA).  Added to improve data quality for data item M201210 - Reason Patient Does Not Have IMCA
MHS005 Patient Indicators	Addition	INDEPENDENT MENTAL HEALTH ADVOCATE ASSIGNED	To indicate whether the patient has been assigned an Independent Mental Health Advocate (IMHA).  Added to improve data quality for data item M201220 - Reason Patient Does Not Have IMHA
MHS101 Service or Team Referral	Addition	CARE PROFESSIONAL LOCAL IDENTIFIER	To provide linkage to the new MHS206 Staff Activity table
MHS204 Indirect Activity	Addition	SUBJECT OF INDIRECT ACTIVITY	To enable the capture of the subject with whom the indirect activity is taking place (e.g. other healthcare professional, educational professional)

Group/ Table	Amend Type	Data Item Name	Change reason
MHS302 Mental Health Drop In Contact	Addition	ORGANISATION IDENTIFIER (CODE OF COMMISSIONER)	Requested by NHSE policy team
MHS502 Ward Stay	Addition	LOCAL WARD IDENTIFIER	Linkage with the new MHS903 Ward Details table

## 3.4 Relocation and replacement of data items

### 3.4.1 Relocation of data items

**Change reason:** 24 data items have been removed from their previous table and relocated elsewhere within the data set. These changes were implemented to improve the capture of data. In addition to the data items listed in 3.2.4 above, the following data items have also been relocated:

Group/Table moved from	Group/Table moved to	Data Item name
MHS203 Other in Attendance	MHS201 Care Contact	REASON PATIENT DOES NOT HAVE INDEPENDENT MENTAL CAPACITY ADVOCATE
MHS203 Other in Attendance	MHS201 Care Contact	REASON PATIENT DOES NOT HAVE INDEPENDENT MENTAL HEALTH ADVOCATE
MHS102 Other Service or Team Type	MHS902 Service or Team Details	SERVICE OR TEAM TYPE REFERRED TO (MENTAL HEALTH)

### 3.4.2 Replacement of data items

**Change reason:** Listed below are data items that have been replaced.

Group/ Table	Amend Type	Data Item Name	Change reason
MHS102 Service or Team Type Referred To	Addition	OTHER CARE PROFESSIONAL TEAM LOCAL IDENTIFIER	Replaces M102010 - SERVICE OR TEAM TYPE REFERRED TO (MENTAL HEALTH), which has been relocated to the new 'MHS902 Service or Team Details' lookup table.
MHS201 Care Contact	Addition	OTHER CARE PROFESSIONAL TEAM LOCAL IDENTIFIER	Replaces M201905 - CARE PROFESSIONAL TEAM LOCAL IDENTIFIER to provide linkage to 'MHS102 Service or Team Type Referred To' table.
MHS204 Care Contact	Addition	OTHER CARE PROFESSIONAL TEAM LOCAL IDENTIFIER	Replaces M204905 - CARE PROFESSIONAL TEAM LOCAL IDENTIFIER to provide linkage to the 'MHS102 Service or Team Type Referred To' table.

## 3.5 Data table and data item amendments

### 3.5.1 Changes in mandate - MHS104 Referral to Treatment (RTT) table

**Change reason:** Referral to Treatment (RTT) data is no longer a national reporting priority, however, the RTT table cannot be removed from v6.0 of the MHSDS, as it is governed by a separate RTT standard. Therefore, the mandate of the RTT table has been changed from Required to Optional and it will be made clear in guidance to providers that they no longer have to submit this table.

Group/ Table	Item Type	Amend Type	Previous	New
MHS104 Referral to Treatment (RTT)	Data Table	Amendment	Required	Optional

### 3.5.2 Data item amendments

Listed below are data items that have been amended and are not part of the format changes listed in sections 3.6 or 3.7.

Group/ Table	Data item	New National Code	Change reason
MHS009 Care Plan Agreement	FAMILY INVOLVED IN CARE PLAN INDICATOR	TBC - Not applicable	To enable capture of data where 'Family Involved in Care Plan Indicator' is not applicable.
MHS009 Care Plan Agreement	FAMILY NOT INVOLVED IN CARE PLAN REASON	TBC - Not applicable	To enable capture of data where 'Family Involved in Care Plan Indicator' is not applicable.
MHS101 Service or Team Referral	SOURCE OF REFERRAL FOR MENTAL HEALTH SERVICES DATA SET	Q2 - Mental Health Support Team	Requested by NHSE policy team to capture additional team type
MHS105 Onward Referral	REFERRED OUT OF AREA REASON (ADULT ACUTE MENTAL HEALTH)	15 - Patient away from home	Requested by NHSE policy team to capture additional 'Referred out of Area' reason.
MHS302 Mental Health Drop In Contact	MENTAL HEALTH DROP IN CONTACT SERVICE TYPE	F01 - Mental Health Support Team	Requested by NHSE policy team to capture additional team type
MHS515 Restrictive Intervention Type	RESTRICTIVE INTERVENTION TYPE	TBC - Unknown	To enable flow of data if restrictive intervention type is unknown.

## 3.6 Changes to align with other data sets

### 3.6.1 SNOMED CT Expressions format changes

We have made 38 changes to SNOMED CT Expressions to change the format to a max an4000 format.

**Change reason:** This is a cross-data set change updated to mirror the Commissioning Data Set (CDS) and to provide consistency across other data sets. These changes have been advised by the NHS Data Model and Dictionary.

These changes are listed below Cross-data set change advised by NHSD Data Dictionary and updated to mirror the CDS format.

Group/ Table	Data Item	Previous	New
MHS010 Assistive Technology To Support Disability Type	ASSISTIVE TECHNOLOGY FINDING (SNOMED CT)	min n6 max n18	min an6 max an4000
MHS011 Social and Personal Circumstances	SOCIAL AND PERSONAL CIRCUMSTANCE (SNOMED CT)	min n6 max n18	min an6 max an4000
MHS105 Onward Referral	CODED REFERRAL PROCEDURE AND PROCEDURE STATUS (SNOMED CT)	min an6 max an56	min an6 max an4000
MHS202 Care Activity	CODED OBSERVATION (SNOMED CT)	min n6 max n18	min an6 max an4000
MHS202 Care Activity	CODED PROCEDURE AND PROCEDURE STATUS (SNOMED CT)	min an6 max an56	min an6 max an4000
MHS202 Care Activity	MAPPED SNOMED CT FINDING CODE	min n6 max n18	min an6 max an4000
MHS202 Care Activity	MAPPED SNOMED CT FINDING PREFERRED TERM	max an255	min an6 max an4000
MHS202 Care Activity	MASTER SNOMED CT FINDING CODE	min n6 max n18	min an6 max an4000
MHS202 Care Activity	MASTER SNOMED CT FINDING PREFERRED TERM	max an255	min an6 max an4000
MHS202 Care Activity	MAPPED SNOMED CT OBSERVATION CODE	min n6 max n18	min an6 max an4000
MHS202 Care Activity	MAPPED SNOMED CT OBSERVATION PREFERRED TERM	max an255	min an6 max an4000
MHS202 Care Activity	MASTER SNOMED CT OBSERVATION CODE	min n6 max n18	min an6 max an4000
MHS202 Care Activity	MASTER SNOMED CT OBSERVATION PREFERRED TERM	max an255	min an6 max an4000
MHS204 Indirect Activity	CODED INDIRECT ACTIVITY PROCEDURE AND PROCEDURE STATUS (SNOMED CT)	min an6 max an56	min an6 max an4000
MHS204 Indirect Activity	MAPPED SNOMED CT FINDING CODE	min n6 max n18	min an6 max an4000
MHS204 Indirect Activity	MAPPED SNOMED CT FINDING PREFERRED TERM	max an255	min an6 max an4000
MHS204 Indirect Activity	MASTER SNOMED CT FINDING CODE	min n6 max n18	min an6 max an4000
MHS601 Medical History (Previous Diagnosis)	MASTER SNOMED CT FINDING PREFERRED TERM	min n6 max n18	min an6 max an4000

Group/ Table	Data Item	Previous	New
MHS601 Medical History (Previous Diagnosis)	MAPPED SNOMED CT PREVIOUS DIAGNOSIS CODE	max an255	min an6 max an4000
MHS601 Medical History (Previous Diagnosis)	MAPPED SNOMED CT PREVIOUS DIAGNOSIS PREFERRED TERM	min n6 max n18	min an6 max an4000
MHS601 Medical History (Previous Diagnosis)	MASTER SNOMED CT PREVIOUS DIAGNOSIS CODE	max an255	min an6 max an4000
MHS603 Provisional Diagnosis	MASTER SNOMED CT PREVIOUS DIAGNOSIS PREFERRED TERM	min n6 max n18	min an6 max an4000
MHS603 Provisional Diagnosis	MAPPED SNOMED CT PROVISIONAL DIAGNOSIS CODE	max an255	min an6 max an4000
MHS603 Provisional Diagnosis	MAPPED SNOMED CT PROVISIONAL DIAGNOSIS PREFERRED TERM	min n6 max n18	min an6 max an4000
MHS603 Provisional Diagnosis	MASTER SNOMED CT PROVISIONAL DIAGNOSIS CODE	max an255	min an6 max an4000
MHS604 Primary Diagnosis	MASTER SNOMED CT PROVISIONAL DIAGNOSIS PREFERRED TERM	min n6 max n18	min an6 max an4000
MHS604 Primary Diagnosis	MAPPED SNOMED CT PRIMARY DIAGNOSIS CODE	min n6 max n18	min an6 max an4000
MHS604 Primary Diagnosis	MAPPED SNOMED CT PRIMARY DIAGNOSIS PREFERRED TERM	max an255	min an6 max an4000
MHS604 Primary Diagnosis	MASTER SNOMED CT PRIMARY DIAGNOSIS CODE	min n6 max n18	min an6 max an4000
MHS604 Primary Diagnosis	MASTER SNOMED CT PRIMARY DIAGNOSIS PREFERRED TERM	max an255	min an6 max an4000
MHS605 Secondary Diagnosis	MAPPED SNOMED CT SECONDARY DIAGNOSIS CODE	min n6 max n18	min an6 max an4000
MHS605 Secondary Diagnosis	MAPPED SNOMED CT SECONDARY DIAGNOSIS PREFERRED TERM	max an255	min an6 max an4000
MHS605 Secondary Diagnosis	MASTER SNOMED CT SECONDARY DIAGNOSIS CODE	min n6 max n18	min an6 max an4000
MHS605 Secondary Diagnosis	MASTER SNOMED CT SECONDARY DIAGNOSIS PREFERRED TERM	max an255	min an6 max an4000
MHS606 Coded Scored Assessment (Referral)	CODED ASSESSMENT TOOL TYPE (SNOMED CT)	min n6 max n18	min an6 max an4000



Group/ Table	Data Item	Previous	New
MHS607 Coded Scored Assessment (Care Activity)	CODED ASSESSMENT TOOL TYPE (SNOMED CT)	min n6 max n18	min an6 max an4000
MHS608 Anonymous Self-Assessment	CODED ASSESSMENT TOOL TYPE (SNOMED CT)	min n6 max n18	min an6 max an4000
MHS802 Coded Scored Assessment (Clustering Tool)	CODED ASSESSMENT TOOL TYPE (SNOMED CT)	min n6 max n18	min an6 max an4000

### 3.6.2 Other format updates

Other format updates are listed in the table below.

Group/ Table	Data Item	Previous	New	Change Reason(s)
MHS002 GP Practice Registration	GENERAL MEDICAL PRACTICE (PATIENT REGISTRATION)	an6	min an6 max an8	To allow organisation codes with 8 characters to flow.
MHS101 Service or Team Referral	ORGANISATION IDENTIFIER (REFERRING ORGANISATION)	Min an3 max an6	Min an3 max an8	To allow organisation codes with 8 characters to flow, specifically schools.

## 3.7 Updates in line with recent and wider NHS Data Model & Dictionary developments.

### 3.7.1 TOS-wide updates to definitions

A full review of descriptions was carried out and all data item descriptions in the TOS were updated to match the NHS Data Model and Dictionary definitions.

### 3.7.2 Definition of Mental Health Delayed Discharge

The definition of Mental Health Delayed Discharge was also changed as requested by the NHSE Adult Mental Health Team. This does not form part of the TOS, but will be included in the User Guidance.

The NHS Digital Data Model and Dictionary team requested Further changes are outlined in the table below.

### 3.7.3 Additional NHS Digital Data Model and Dictionary changes

Group/ Table	Item Type	Previous	New	Change Reason(s)
MHS903 Ward Details	Data Item	SEX OF PATIENTS CODE (MENTAL HEALTH)	WARD INTENDED SEX OF PATIENTS (MENTAL HEALTH)	To reflect the sex of patients which the ward is set up to receive, and not necessarily the sex of patients who are on the ward.
MHS903 Ward Details	Data Item	INTENDED CLINICAL CARE INTENSITY CODE (MENTAL HEALTH)	WARD INTENDED CLINICAL CARE INTENSITY (MENTAL HEALTH)	To reflect the ward operational plan – the level of care intended to be provided on the ward – NOT the actuality of care that patients may receive.
MHS201 Care Contact	Data Item	ATTENDED OR DID NOT ATTEND CODE	ATTENDANCE STATUS	To bring into alignment with CDS.

## 3.8 Maintenance updates

The Data Set Development Service (DSDS) maintain a requirements tracker to record ongoing future requests for changes to the data set. These requirements are shared with the NHS England policy teams for ongoing review and potential inclusion in future updates to the data set.

## 3.9 Change control

The *Technical Output Specification* fully defines the individual changes applied to the data set, with each change logged in the 'Summary of Changes' tab. This *Change Specification* therefore represents a summary of changes included in MHS v6.0 which should be read in conjunction with the 'Summary of Changes' tab in the *Technical Output Specification* to fully understand the changes to the data set.

N.B. The latest version of the Enhanced Technical Output Specification (ETOS) is published with other supporting documents on the NHS Digital [MHS v6.0 Specifications and Guidance webpage](https://digital.nhs.uk/data-and-information/data-collections-and-data-sets/data-sets/mental-health-services-data-set/mental-health-services-data-set-specifications-and-guidance)<sup>3</sup>.

<sup>3</sup> <https://digital.nhs.uk/data-and-information/data-collections-and-data-sets/data-sets/mental-health-services-data-set/mental-health-services-data-set-specifications-and-guidance>

## 4 Appendix 1: Removal of pilot table - MHS107 Medication Prescription

**Aim:** To enable linkage with the Electronic Prescribing and Medicines Administration (ePMA) data set to flow prescription data

The original requirement came from the Mental Health Pharmacy team at NHS England, which was to introduce a new data item to flow or link ePMA data through to the MHSDS.

The ePMA ISN was published in June 2022 for data collection from April 2023.

### Option 1

Following consultation, it was agreed that linkage would be achieved by using the Local Prescription Identifier which has been drafted into the Technical Output Specification. This has been achieved by changing the status of the MHS107 Medication Prescription table from Pilot to Required.

### Option 2

Following consultation, it was agreed that linkage would be achieved by linking the asset after the data lands using the NHS Number and relevant dates.